

# ABflo® 594 Rabbit anti-Human ICAM2/CD102 mAb

Catalog No.: A24588

## Basic Information

### Observed MW

Refer to figures

### Calculated MW

30kDa

### Category

Primary antibody

### Applications

FC

### Cross-Reactivity

Human

### CloneNo number

ARC59369-ABflo594

### Conjugate

ABflo® 594. Ex:588nm. Em:604nm.

## Recommended Dilutions

**FC** 5 µl per 10<sup>6</sup> cells in  
100 µl volume

## Background

The protein encoded by this gene is a member of the intercellular adhesion molecule (ICAM) family. All ICAM proteins are type I transmembrane glycoproteins, contain 2-9 immunoglobulin-like C2-type domains, and bind to the leukocyte adhesion LFA-1 protein. This protein may play a role in lymphocyte recirculation by blocking LFA-1-dependent cell adhesion. It mediates adhesive interactions important for antigen-specific immune response, NK-cell mediated clearance, lymphocyte recirculation, and other cellular interactions important for immune response and surveillance. Several transcript variants encoding the same protein have been found for this gene.

## Immunogen Information

### Gene ID

3384

### Swiss Prot

P13598

### Immunogen

Recombinant fusion protein containing a sequence corresponding to amino acids 25-223 of human ICAM2/CD102 (NP\_000864.2).

### Synonyms

ICAM2; CD102; intercellular adhesion molecule 2

## Contact

☎ | 400-999-6126

✉ | [cn.market@abclonal.com.cn](mailto:cn.market@abclonal.com.cn)

🌐 | [www.abclonal.com.cn](http://www.abclonal.com.cn)

## Product Information

### Source

Rabbit

### Isotype

IgG

### Purification

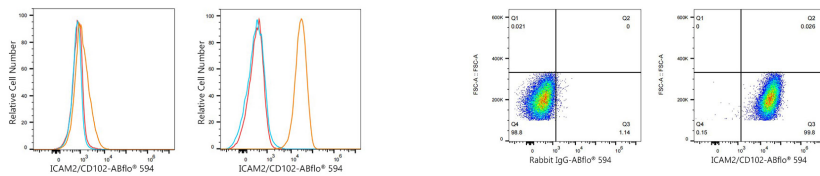
Affinity purification

### Storage

Store at 2-8°C. Avoid freeze.

Buffer: PBS with 0.03% proclin300,0.2% BSA,pH7.3.

## Validation Data



Flow cytometry:  $1 \times 10^6$  293T cells (negative control, left) and Jurkat cells (right) were surface-stained with ABflo® 594 Rabbit anti-Human ICAM2/CD102 mAb (A24588, 5  $\mu$ l/Test, orange line) or ABflo® 594 Rabbit IgG isotype control (A23821, 5  $\mu$ l/Test, blue line). Non-fluorescently stained cells were used as blank control (red line).

Flow cytometry:  $1 \times 10^6$  Jurkat cells were surface-stained with ABflo® 594 Rabbit IgG isotype control (A23821, 5  $\mu$ l/Test, left) or ABflo® 594 Rabbit anti-Human ICAM2/CD102 mAb (A24588, 5  $\mu$ l/Test, right).