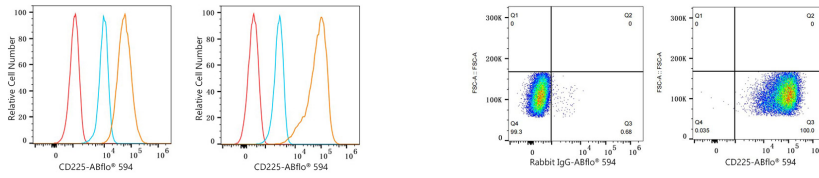




## Validation Data



Flow cytometry:  $1 \times 10^6$  U-251MG cells (Low Expression, left) and K-562 cells (right) were intracellularly-stained with ABflo® 594 Rabbit anti-Human CD225/IFITM1 mAb (A24591,5  $\mu$ l/Test, orange line) or ABflo® 594 Rabbit IgG isotype control (A23821,5  $\mu$ l/Test, blue line). Non-fluorescently stained cells were used as blank control (red line).

Flow cytometry:  $1 \times 10^6$  K-562 cells were intracellularly-stained with ABflo® 594 Rabbit IgG isotype control (A23821,5  $\mu$ l/Test, left) or ABflo® 594 Rabbit anti-Human CD225/IFITM1 mAb (A24591,5  $\mu$ l/Test, right).