

ABflo® 488 Rabbit anti-Human CD22 mAb

Catalog No.: A24599

Basic Information

Observed MW

Calculated MW
95kDa

Category
Primary antibody

Applications
FC

Cross-Reactivity
Human

CloneNo number
ARC59252-ABf488

Conjugate
ABflo® 488. Ex:491nm. Em:516nm.

Recommended Dilutions

FC 5 µl per 10⁶ cells in
100 µl volume

Background

Predicted to enable CD4 receptor binding activity; protein phosphatase binding activity; and sialic acid binding activity. Involved in B cell activation; negative regulation of B cell receptor signaling pathway; and regulation of endocytosis. Located in early endosome and recycling endosome.

Immunogen Information

Gene ID 933
Swiss Prot P20273

Immunogen
Recombinant fusion protein containing a sequence corresponding to amino acids 20-687 of human CD22 (NP_001762.2).

Synonyms
CD22; SIGLEC-2; SIGLEC2; CD22 molecule

Contact

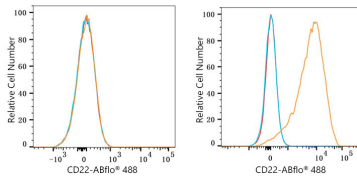
 | 400-999-6126
 | cn.market@abclonal.com.cn
 | www.abclonal.com.cn

Product Information

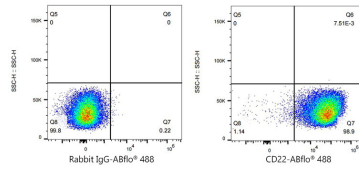
Source Rabbit
Isotype IgG
Purification Affinity purification

Storage
Store at 2-8°C. Avoid freeze.
Buffer: PBS with 0.03% proclin300,0.2% BSA,pH7.3.

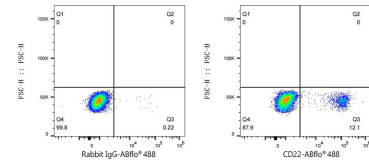
Validation Data



Flow cytometry: 1×10^6 Jurkat cells (negative control, left) and Daudi (right) were surface-stained with ABflo® 488 Rabbit anti-Human CD22 mAb (A24599, 5 μ l/Test, orange line) or ABflo® 488 Rabbit IgG isotype control (A22069, 5 μ l/Test, blue line). Non-fluorescently stained cells were used as blank control (red line).



Flow cytometry: 1×10^6 Daudi were surface-stained with ABflo® 488 Rabbit IgG isotype control (A22069, 5 μ l/Test, left) or ABflo® 488 Rabbit anti-Human CD22 mAb (A24599, 5 μ l/Test, right).



Flow cytometry: 1×10^6 Human PBMC were surface-stained with ABflo® 488 Rabbit IgG isotype control (A22069, 5 μ l/Test, left) or ABflo® 488 Rabbit anti-Human CD22 mAb (A24599, 5 μ l/Test, right).