

CD22 Rabbit mAb

Catalog No.: A24600 **Recombinant**

Basic Information

Observed MW

130kDa/140kDa

Calculated MW

75kDa/84kDa/85kDa/95kDa

Category

Primary antibody

Applications

ELISA, WB, FC

Cross-Reactivity

Human

CloneNo number

ARC59252

Background

Predicted to enable CD4 receptor binding activity; protein phosphatase binding activity; and sialic acid binding activity. Involved in B cell activation; negative regulation of B cell receptor signaling pathway; and regulation of endocytosis.

Recommended Dilutions

WB 1:1000 - 1:3000

FC 1:500 - 1:1000

Immunogen Information

Gene ID

933

Swiss Prot

P20273

Immunogen

Recombinant fusion protein containing a sequence corresponding to amino acids 20-687 of human CD22 (NP_001762.2).

Synonyms

CD22; SIGLEC-2; SIGLEC2; CD22 molecule

Contact

☎ | 400-999-6126

✉ | cn.market@abclonal.com.cn

🌐 | www.abclonal.com.cn

Product Information

Source

Rabbit

Isotype

IgG

Purification

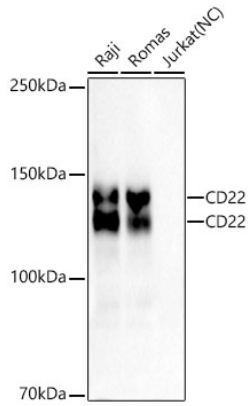
Affinity purification

Storage

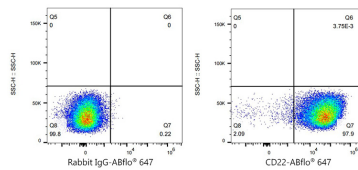
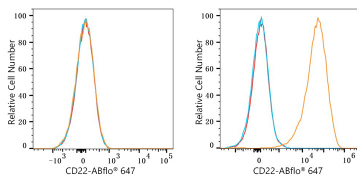
Store at -20°C. Avoid freeze / thaw cycles.

Buffer: PBS with 0.05% proclin300, 0.05% BSA, 50% glycerol, pH7.3.

Validation Data



Western blot analysis of various lysates, using CD22 Rabbit mAb (A24600) at 1:6000 dilution.
 Secondary antibody: HRP Goat Anti-Rabbit IgG (H+L) (AS014) at 1:10000 dilution.
 Lysates/proteins: 25ug per lane.
 Blocking buffer: 3% nonfat dry milk in TBST.
 Detection: ECL Basic Kit (RM00020).
 Exposure time: 180s.



Flow cytometry: 1×10^6 Jurkat cells (negative control, left) and Daudi cells (right) were surface-stained with CD22 Rabbit mAb (A24600, 2 μ g/mL, orange line) or ABflo® 647 Rabbit IgG isotype control (A22070, 2 μ g/mL, blue line), followed by Alexa Fluor® 647 conjugated goat anti-rabbit pAb staining. Non-fluorescently stained cells were used as blank control (red line).

Flow cytometry: 1×10^6 Daudi cells were surface-stained with ABflo® 647 Rabbit IgG isotype control (A22070, 2 μ g/mL, left) or CD22 Rabbit mAb (A24600, 2 μ g/mL, right).