

PMPCA Rabbit mAb

Catalog No.: A24606 **Recombinant**

Basic Information

Observed MW

58 kDa

Calculated MW

58 kDa

Category

Primary antibody

Applications

WB,IF/ICC,IHC-P,IP,ELISA

Cross-Reactivity

Human, Mouse, Rat

CloneNo number

ARC63472

Background

The protein encoded by this gene is found in the mitochondrion, where it represents the alpha subunit of a proteolytic heterodimer. This heterodimer is responsible for cleaving the transit peptide from nuclear-encoded mitochondrial proteins. Defects in this gene are a cause of spinocerebellar ataxia, autosomal recessive 2.

Recommended Dilutions

WB	1:2000 - 1:10000
IF/ICC	1:200 - 1:400
IHC-P	1:100 - 1:500
IP	0.5µg-4µg antibody for 200µg-400µg extracts of whole cells
ELISA	Recommended starting concentration is 1 µg/mL. Please optimize the concentration based on your specific assay requirements.

Contact

☎ | 400-999-6126

✉ | cn.market@abclonal.com.cn

🌐 | www.abclonal.com.cn

Immunogen Information

Gene ID

23203

Swiss Prot

Q10713

Immunogen

Recombinant protein (or fragment). This information is considered to be commercially sensitive.

Synonyms

CLA1; CPD3; MAS2; P-55; SCAR2; INPP5E; Alpha-MPP; PMPCA

Product Information

Source

Rabbit

Isotype

IgG

Purification

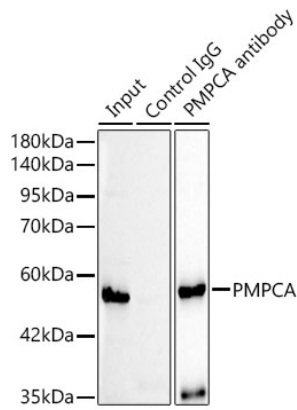
Affinity purification

Storage

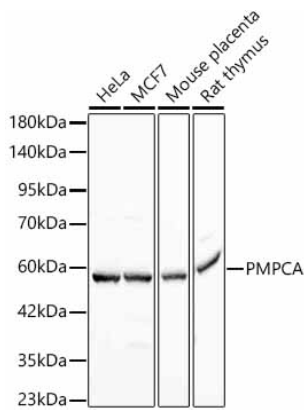
Store at -20°C. Avoid freeze / thaw cycles.

Buffer: PBS containing 50% glycerol and 0.05% BSA, preserved with proclin300 or sodium azide (as specified on the Certificate of Analysis), pH 7.3.

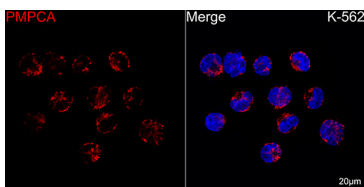
Validation Data



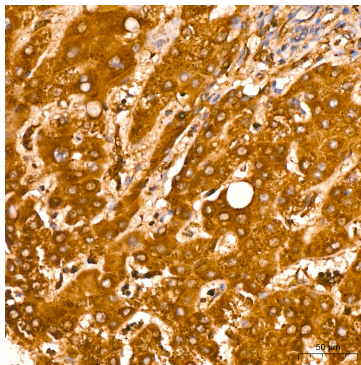
Immunoprecipitation analysis of 300ug extracts of HeLa cells using 3ug PMPCA antibody (A24606 1:200). Western blot was performed from the immunoprecipitate using PMPCA antibody at a dilution of 1:2000.



Western blot analysis of various lysates, using PMPCA Rabbit mAb (A24606) at 1:4000 dilution. Secondary antibody: HRP-conjugated Goat anti-Rabbit IgG (H+L) (AS014) at 1:10000 dilution. Lysates/proteins: 25µg per lane. Blocking buffer: 3% nonfat dry milk in TBST. Detection: ECL Basic Kit (RM00020). Exposure time: 1s.



Confocal imaging of K-562 cells using PMPCA Rabbit mAb (A24606, dilution 1:200) followed by a further incubation with Cy3 Goat Anti-Rabbit IgG (H+L) (AS007, dilution 1:500) (Red). DAPI was used for nuclear staining (Blue). Objective: 100x.



Immunohistochemistry analysis of paraffin-embedded Human liver using PMPCA Rabbit mAb (A24606) at dilution of 1:300 (40x lens). High pressure antigen retrieval performed with 0.01M Citrate buffer (pH 6.0) prior to IHC staining.