

# [KO Validated] HADHA Rabbit mAb

Catalog No.: A24608 **KO Validated** **Recombinant**

## Basic Information

### Observed MW

75kDa

### Calculated MW

83kDa

### Category

Primary antibody

### Applications

ELISA, WB, IHC-P, IF/ICC, IP

### Cross-Reactivity

Human

### CloneNo number

ARC61203

## Background

This gene encodes the alpha subunit of the mitochondrial trifunctional protein, which catalyzes the last three steps of mitochondrial beta-oxidation of long chain fatty acids. The mitochondrial membrane-bound heterocomplex is composed of four alpha and four beta subunits, with the alpha subunit catalyzing the 3-hydroxyacyl-CoA dehydrogenase and enoyl-CoA hydratase activities. Mutations in this gene result in trifunctional protein deficiency or LCHAD deficiency. The genes of the alpha and beta subunits of the mitochondrial trifunctional protein are located adjacent to each other in the human genome in a head-to-head orientation.

## Recommended Dilutions

**WB** 1:1000 - 1:3000**IHC-P** 1:50 - 1:400**IF/ICC** 1:50 - 1:200**IP** 0.5µg-4µg antibody for  
200µg-400µg extracts of  
whole cells

## Immunogen Information

### Gene ID

3030

### Swiss Prot

P40939

### Immunogen

Recombinant fusion protein containing a sequence corresponding to amino acids 545-763 of human HADHA (NP\_000173.2).

### Synonyms

GBP; ECHA; HADH; LCEH; MTPA; LCHAD; TP-ALPHA; HA

## Contact

 | 400-999-6126 | [cn.market@abclonal.com.cn](mailto:cn.market@abclonal.com.cn) | [www.abclonal.com.cn](http://www.abclonal.com.cn)

## Product Information

### Source

Rabbit

### Isotype

IgG

### Purification

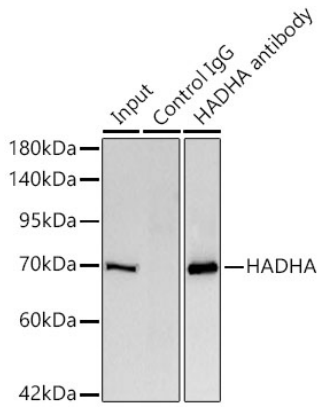
Affinity purification

### Storage

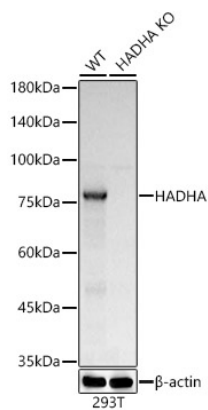
Store at -20°C. Avoid freeze / thaw cycles.

Buffer: PBS with 0.05% proclin300, 0.05% BSA, 50% glycerol, pH7.3.

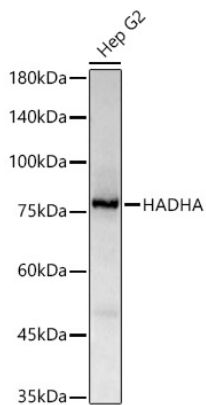
## Validation Data



Immunoprecipitation analysis of 300ug extracts of 293T cells using 3ug HADHA antibody (A24608 1:100). Western blot was performed from the immunoprecipitate using HADHA antibody (A23892) at a dilution of 1:5000.



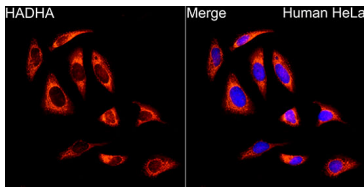
Western blot analysis of lysates from wild type (WT) and HADHA knockout (KO) 293T cells, using HADHA Rabbit mAb (A24608) at 1:2000 dilution. Secondary antibody: HRP Goat Anti-Rabbit IgG (H+L) (AS014) at 1:10000 dilution. Lysates/proteins: 25ug per lane. Blocking buffer: 3% nonfat dry milk in TBST. Detection: ECL Basic Kit (RM00020). Exposure time: 1s.



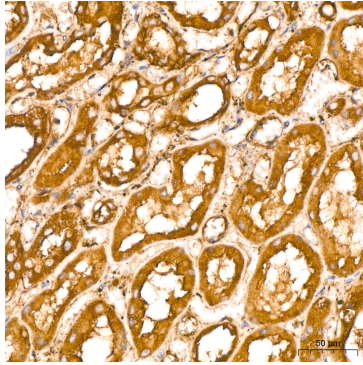
Western blot analysis of lysates from Hep G2 cells, using HADHA Rabbit mAb (A24608) at 1:2000 dilution. Secondary antibody: HRP Goat Anti-Rabbit IgG (H+L) (AS014) at 1:10000 dilution. Lysates/proteins: 25ug per lane. Blocking buffer: 3% nonfat dry milk in TBST. Detection: ECL Basic Kit (RM00020). Exposure time: 1s.

## Validation Data

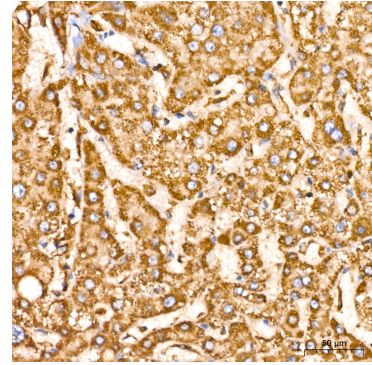
---



Immunofluorescence analysis of HeLa cells using HADHA Rabbit mAb (A24608) at dilution of 1:100 (40x lens). Secondary antibody: Cy3 Goat Anti-Rabbit IgG (H+L) (AS007) at 1:500 dilution. Blue: DAPI for nuclear staining.



Immunohistochemistry analysis of HADHA in paraffin-embedded human kidney using HADHA Rabbit mAb (A24608) at dilution of 1:200 (40x lens). Perform high pressure antigen retrieval with 10 mM citrate buffer pH 6.0 before commencing with IHC staining protocol.



Immunohistochemistry analysis of HADHA in paraffin-embedded human liver using HADHA Rabbit mAb (A24608) at dilution of 1:200 (40x lens). Perform high pressure antigen retrieval with 10 mM citrate buffer pH 6.0 before commencing with IHC staining protocol.