

# CDA Rabbit mAb

Catalog No.: A24610 **Recombinant**

## Basic Information

### Observed MW

16kDa

### Calculated MW

16kDa

### Category

Primary antibody

### Applications

ELISA,IHC-P,FC (intra)

### Cross-Reactivity

Human, Mouse

### CloneNo number

ARC63546

## Background

This gene encodes an enzyme involved in pyrimidine salvaging. The encoded protein forms a homotetramer that catalyzes the irreversible hydrolytic deamination of cytidine and deoxycytidine to uridine and deoxyuridine, respectively. It is one of several deaminases responsible for maintaining the cellular pyrimidine pool. Mutations in this gene are associated with decreased sensitivity to the cytosine nucleoside analogue cytosine arabinoside used in the treatment of certain childhood leukemias.

## Recommended Dilutions

IHC-P	1:500 - 1:1000
FC (intra)	1:50- 1:100

## Immunogen Information

### Gene ID

978

### Swiss Prot

P32320

### Immunogen

Recombinant fusion protein containing a sequence corresponding to amino acids 1-146 of human CDA(NP\_001776.1).

### Synonyms

CDD; CDA

## Contact

☎ | 400-999-6126

✉ | [cn.market@abclonal.com.cn](mailto:cn.market@abclonal.com.cn)

🌐 | [www.abclonal.com.cn](http://www.abclonal.com.cn)

## Product Information

### Source

Rabbit

### Isotype

IgG

### Purification

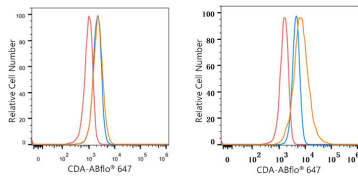
Affinity purification

### Storage

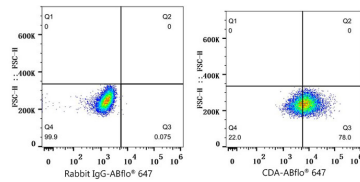
Store at -20°C. Avoid freeze / thaw cycles.

Buffer: PBS with 0.05% proclin300,0.05% BSA,50% glycerol,pH7.3.

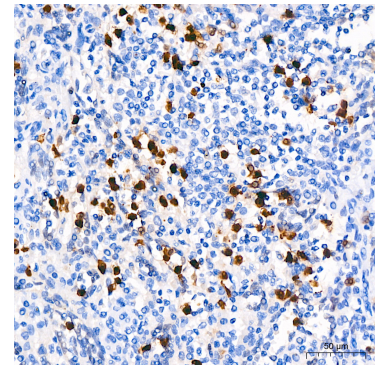
## Validation Data



Flow cytometry:  $1 \times 10^6$  HEL cells (negative control, left) and HeLa cells (right) were intracellularly-stained with CDA Rabbit mAb (A24610, 2  $\mu\text{g}/\text{mL}$ , orange line) or ABflo® 647 Rabbit IgG isotype control (A22070, 5  $\mu\text{l}/\text{Test}$ , blue line), followed by ABflo® 647 conjugated goat anti-rabbit pAb staining. Non-fluorescently stained cells were used as blank control (red line).



Flow cytometry:  $1 \times 10^6$  HeLa cells were intracellularly-stained with ABflo® 647 Rabbit IgG isotype control (A22070, 2  $\mu\text{g}/\text{mL}$ , left) or CDA Rabbit mAb (A24610, 2  $\mu\text{g}/\text{mL}$ , right).



Immunohistochemistry analysis of CDA in paraffin-embedded human spleen using CDA Rabbit mAb (A24610) at dilution of 1:1000 (40x lens). Perform high pressure antigen retrieval with 10 mM citrate buffer pH 6.0 before commencing with IHC staining protocol.