

ABflo® 488 Rabbit anti-Mouse CD22 mAb

Catalog No.: A24627

Basic Information

Observed MW

Refer to figures

Calculated MW

89kDa/93kDa/97kDa

Category

Primary antibody

Applications

IF/ICC,FC

Cross-Reactivity

Mouse

CloneNo number

ARC62722-ABflo488

Conjugate

ABflo® 488. Ex:491nm. Em:516nm.

Recommended Dilutions

IF/ICC 1:50 - 1:200

FC 5 µl per 10⁶ cells in
100 µl volume

Background

Enables CD4 receptor binding activity; protein phosphatase binding activity; and sialic acid binding activity. Involved in several processes, including negative regulation of calcium-mediated signaling; negative regulation of immunoglobulin production; and regulation of B cell proliferation. Located in external side of plasma membrane and neuronal cell body membrane. Is integral component of plasma membrane. Is expressed in several structures, including alimentary system; brain; hemolymphoid system gland; liver and biliary system; and reproductive system. Orthologous to human CD22 (CD22 molecule).

Immunogen Information

Gene ID

12483

Swiss Prot

P35329

Immunogen

Recombinant fusion protein containing a sequence corresponding to amino acids 22-151 of mouse CD22 (NP_033975.3).

Synonyms

Lyb8; Lyb-8; A530093D23

Contact

☎ | 400-999-6126

✉ | cn.market@abclonal.com.cn

🌐 | www.abclonal.com.cn

Product Information

Source

Rabbit

Isotype

IgG

Purification

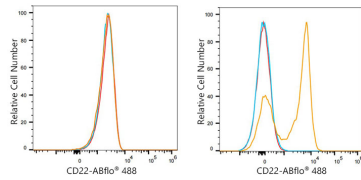
Affinity purification

Storage

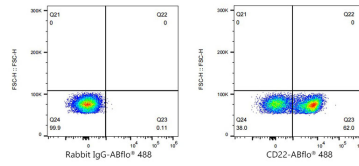
Store at 2-8°C. Avoid freeze.

Buffer: PBS with 0.03% proclin300,0.2% BSA,pH7.3.

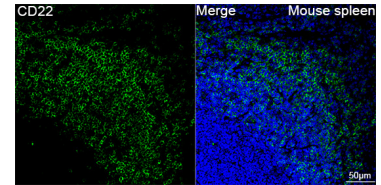
Validation Data



Flow cytometry: 1X10⁶ NIH/3T3 cells (negative control, left) and C57BL/6 splenocytes (right) were surface-stained with ABflo® 488 Rabbit anti-Mouse CD22 mAb (A24627, 5 µl/Test, orange line) or ABflo® 488 Rabbit IgG isotype control (A22069, 5 µl/Test, blue line). Non-fluorescently stained cells were used as blank control (red line).



Flow cytometry: 1X10⁶ C57BL/6 splenocytes were surface-stained with ABflo® 488 Rabbit IgG isotype control (A22069, 5 µl/Test, left) or ABflo® 488 Rabbit anti-Mouse CD22 mAb (A24627, 5 µl/Test, right).



Confocal imaging of paraffin-embedded Mouse spleen tissue using ABflo® 488 Rabbit anti-Mouse CD22 mAb (A24627, dilution 1:200). DAPI was used for nuclear staining (Blue). High pressure antigen retrieval performed with 0.01M Citrate Buffer (pH 6.0) prior to IF staining. Objective: 40x.