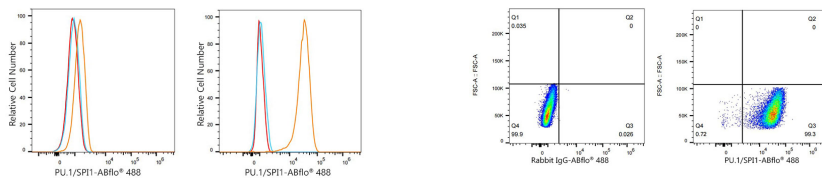


Validation Data



Flow cytometry: 1×10^6 HAP1 cells (negative control, left) and THP-1 cells (right) were intracellularly-stained with ABflo® 488 Rabbit anti-Human PU.1/SPI1 mAb (A24633,5 μ l/Test, orange line) or ABflo® 488 Rabbit IgG isotype control (A22069,5 μ l/Test, blue line). Non-fluorescently stained cells were used as blank control (red line).

Flow cytometry: 1×10^6 THP-1 cells were intracellularly-stained with ABflo® 488 Rabbit IgG isotype control (A22069,5 μ l/Test, left) or ABflo® 488 Rabbit anti-Human PU.1/SPI1 mAb (A24633,5 μ l/Test, right).