

# ABflo® 647 Rabbit anti-Human PU.1/SPI1 mAb

Catalog No.: A24634

## Basic Information

### Observed MW

Refer to figures

### Calculated MW

31kDa

### Category

Primary antibody

### Applications

FC (intra)

### Cross-Reactivity

Human

### CloneNo number

ARC63111-ABflo647

### Conjugate

ABflo® 647, Ex:648nm, Em:664nm.

## Recommended Dilutions

**FC (intra)**      5 µl per 10<sup>6</sup> cells in  
100 µl volume

## Background

This gene encodes an ETS-domain transcription factor that activates gene expression during myeloid and B-lymphoid cell development. The nuclear protein binds to a purine-rich sequence known as the PU-box found near the promoters of target genes, and regulates their expression in coordination with other transcription factors and cofactors. The protein can also regulate alternative splicing of target genes. Multiple transcript variants encoding different isoforms have been found for this gene.

## Immunogen Information

**Gene ID**  
6688

**Swiss Prot**  
P17947

### Immunogen

A synthetic peptide corresponding to a sequence within amino acids 1-100 of human PU.1/SPI1 (NP\_003111.2).


### Synonyms

SPI1; OF; PU.1; SFPI1; SPI-1; SPI-A; Spi-1 proto-oncogene

## Contact

 | 400-999-6126

 | [cn.market@abclonal.com.cn](mailto:cn.market@abclonal.com.cn)

 | [www.abclonal.com.cn](http://www.abclonal.com.cn)

## Product Information

**Source**  
Rabbit

**Isotype**  
IgG

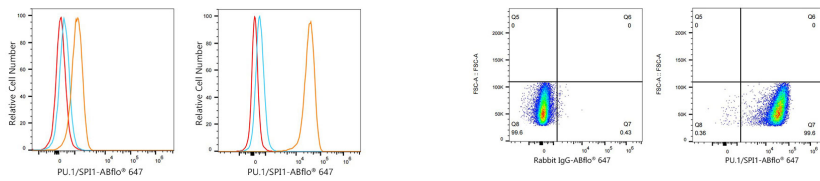
**Purification**  
Affinity purification

### Storage

Store at 2-8°C. Avoid freeze.

Buffer: PBS with 0.03% proclin300,0.2% BSA,pH7.3.

## Validation Data



Flow cytometry:  $1 \times 10^6$  HAP1 cells (negative control, left) and THP-1 cells (right) were intracellularly-stained with ABflo® 647 Rabbit anti-Human PU.1/SPI1 mAb (A24634, 5  $\mu$ l/Test, orange line) or ABflo® 647 Rabbit IgG isotype control (A22070, 5  $\mu$ l/Test, blue line). Non-fluorescently stained cells were used as blank control (red line).

Flow cytometry:  $1 \times 10^6$  THP-1 cells were intracellularly-stained with ABflo® 647 Rabbit IgG isotype control (A22070, 5  $\mu$ l/Test, left) or ABflo® 647 Rabbit anti-Human PU.1/SPI1 mAb (A24634, 5  $\mu$ l/Test, right).