

ATPIF1 Rabbit mAb

Catalog No.: A24640 **Recombinant**

Basic Information

Observed MW

12kDa

Calculated MW

12kDa

Category

Primary antibody

Applications

ELISA, WB, IHC-P, IF/ICC

Cross-Reactivity

Human, Mouse, Rat

CloneNo number

ARC63557

Background

Enables several functions, including ATPase binding activity; angiostatin binding activity; and mitochondrial proton-transporting ATP synthase complex binding activity. Involved in several processes, including mitochondrial depolarization; negative regulation of ATPase activity; and regulation of protein targeting to mitochondrion. Located in cell surface and mitochondrion.

Recommended Dilutions

WB	1:1000 - 1:3000
IHC-P	1:50 - 1:200
IF/ICC	1:50 - 1:200

Immunogen Information

Gene ID

93974

Swiss Prot

Q9UII2

Immunogen

Recombinant fusion protein containing a sequence corresponding to amino acids 26-106 of human ATPIF1 (NP_057395.1).

Synonyms

IP; ATPI; ATPIP; ATPIF1

Contact

☎ | 400-999-6126

✉ | cn.market@abclonal.com.cn

🌐 | www.abclonal.com.cn

Product Information

Source

Rabbit

Isotype

IgG

Purification

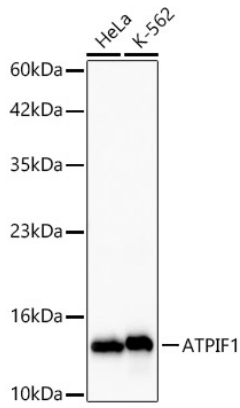
Affinity purification

Storage

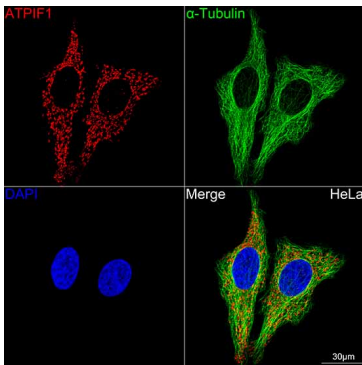
Store at -20°C. Avoid freeze / thaw cycles.

Buffer: PBS with 0.05% proclin300, 0.05% BSA, 50% glycerol, pH7.3.

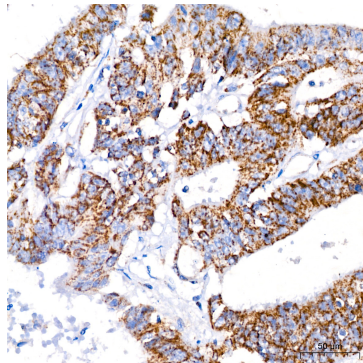
Validation Data



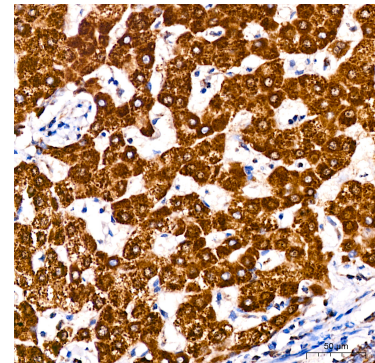
Western blot analysis of various lysates, using ATPIF1 Rabbit mAb (A24640) at 1:2000 dilution.
Secondary antibody: HRP Goat Anti-Rabbit IgG (H+L) (AS014) at 1:10000 dilution.
Lysates/proteins: 25ug per lane.
Blocking buffer: 3% nonfat dry milk in TBST.
Detection: ECL Basic Kit (RM00020).
Exposure time: 15s.



Confocal imaging of HeLa cells using ATPIF1 Rabbit mAb (A24640, at dilution of 1:200) (Red). The cells were counterstained with α -Tubulin Mouse mAb (AC012, dilution 1:400) (Green). DAPI was used for nuclear staining (blue). Objective: 1000x.



Immunohistochemistry analysis of ATPIF1 in paraffin-embedded human colon carcinoma using ATPIF1 Rabbit mAb (A24640) at dilution of 1:200 (40x lens). Perform high pressure antigen retrieval with 10 mM citrate buffer pH 6.0 before commencing with IHC staining protocol.



Immunohistochemistry analysis of ATPIF1 in paraffin-embedded human liver using ATPIF1 Rabbit mAb (A24640) at dilution of 1:200 (40x lens). Perform high pressure antigen retrieval with 10 mM citrate buffer pH 6.0 before commencing with IHC staining protocol.