

# EHF Rabbit mAb

Catalog No.: A24643 **Recombinant**

## Basic Information

### Observed MW

35kDa

### Calculated MW

35kDa

### Category

Primary antibody

### Applications

ELISA, WB

### Cross-Reactivity

Human, Mouse

### CloneNo number

ARC62932

## Background

This gene encodes a protein that belongs to an ETS transcription factor subfamily characterized by epithelial-specific expression (ESEs). The encoded protein acts as a transcriptional repressor and may be involved in epithelial differentiation and carcinogenesis. Three transcript variants encoding different isoforms have been found for this gene.

## Recommended Dilutions

WB 1:500 - 1:1000

## Immunogen Information

### Gene ID

26298

### Swiss Prot

Q9NZC4

### Immunogen

Recombinant fusion protein containing a sequence corresponding to amino acids 1-113 of human EHF(NP\_036285.2)

### Synonyms

ESE3; ESEJ; ESE3B; EHF

## Contact

☎ | 400-999-6126

✉ | [cn.market@abclonal.com.cn](mailto:cn.market@abclonal.com.cn)

🌐 | [www.abclonal.com.cn](http://www.abclonal.com.cn)

## Product Information

### Source

Rabbit

### Isotype

IgG

### Purification

Affinity purification

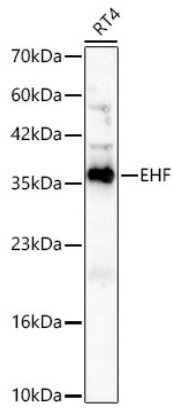
### Storage

Store at -20°C. Avoid freeze / thaw cycles.

Buffer: PBS with 0.05% proclin300, 0.05% BSA, 50% glycerol, pH7.3.

## Validation Data

---



Western blot analysis of lysates from RT4 cells, using EHF Rabbit mAb (A24643) at 1:1000 dilution.  
Secondary antibody: HRP Goat Anti-Rabbit IgG (H+L) (AS014) at 1:10000 dilution.  
Lysates/proteins: 25ug per lane.  
Blocking buffer: 3% nonfat dry milk in TBST.  
Detection: ECL Basic Kit (RM00020).  
Exposure time: 60s.