

# TOMM40 Rabbit mAb

Catalog No.: A24644 **Recombinant**

## Basic Information

### Observed MW

39kDa/41kDa

### Calculated MW

38kDa

### Category

Primary antibody

### Applications

ELISA, WB, IHC-P, IF/ICC

### Cross-Reactivity

Human, Mouse, Rat

### CloneNo number

ARC63318

## Background

The protein encoded by this gene is localized in the outer membrane of the mitochondria. It is the channel-forming subunit of the translocase of the mitochondrial outer membrane (TOM) complex that is essential for import of protein precursors into mitochondria. Alternatively spliced transcript variants have been found for this gene.

## Recommended Dilutions

|               |                 |
|---------------|-----------------|
| <b>WB</b>     | 1:2000 - 1:5000 |
| <b>IHC-P</b>  | 1:100 - 1:500   |
| <b>IF/ICC</b> | 1:100 - 1:500   |

## Immunogen Information

### Gene ID

10452

### Swiss Prot

O96008

### Immunogen

Recombinant fusion protein containing a sequence corresponding to amino acids 1-90 of human TOMM40 (NP\_001122388.1).

### Synonyms

TOM40; PEREC1; C19orf1; PER-EC1; D19S1177E; TOMM40

## Contact

☎ | 400-999-6126

✉ | [cn.market@abclonal.com.cn](mailto:cn.market@abclonal.com.cn)

🌐 | [www.abclonal.com.cn](http://www.abclonal.com.cn)

## Product Information

### Source

Rabbit

### Isotype

IgG

### Purification

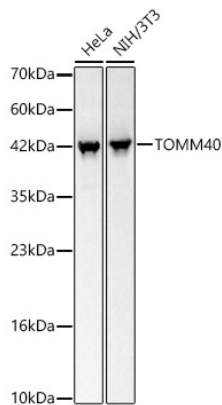
Affinity purification

### Storage

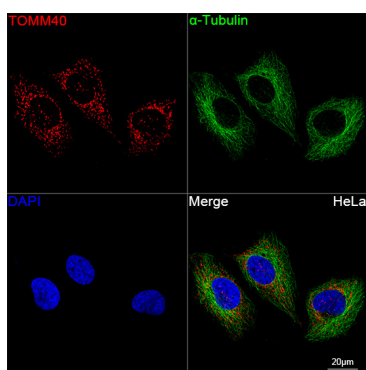
Store at -20°C. Avoid freeze / thaw cycles.

Buffer: PBS with 0.05% proclin300, 0.05% BSA, 50% glycerol, pH7.3.

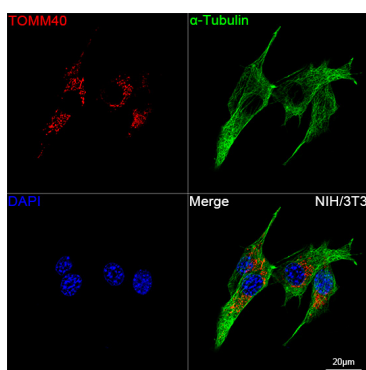
## Validation Data



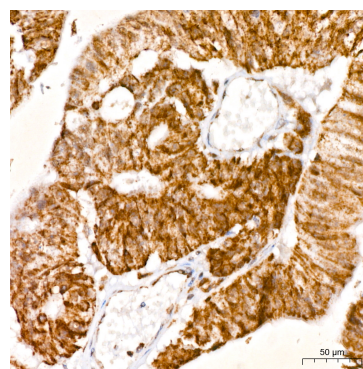
Western blot analysis of various lysates, using TOMM40 Rabbit mAb (A24644) at 1:4800 dilution. Secondary antibody: HRP Goat Anti-Rabbit IgG (H+L) (AS014) at 1:10000 dilution. Lysates/proteins: 25ug per lane. Blocking buffer: 3% nonfat dry milk in TBST. Detection: ECL Basic Kit (RM00020). Exposure time: 5s.



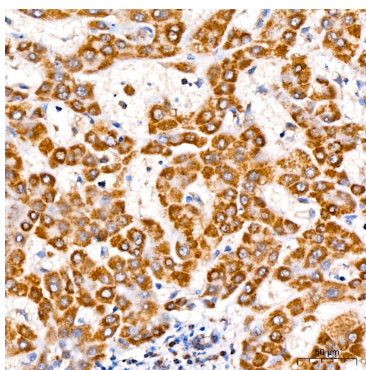
Confocal imaging of HeLa cells using TOMM40 Rabbit mAb (A24644, at dilution of 1:300) (red). The cells were counterstained with  $\alpha$ -Tubulin Mouse mAb (AC012, dilution 1:400) (Green). DAPI was used for nuclear staining (blue). Objective: 100x.



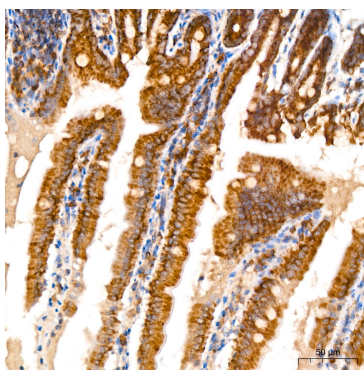
Confocal imaging of NIH/3T3 cells using TOMM40 Rabbit mAb (A24644, at dilution of 1:300) (Red). The cells were counterstained with  $\alpha$ -Tubulin Mouse mAb (AC012, dilution 1:400) (Green). DAPI was used for nuclear staining (blue). Objective: 100x.



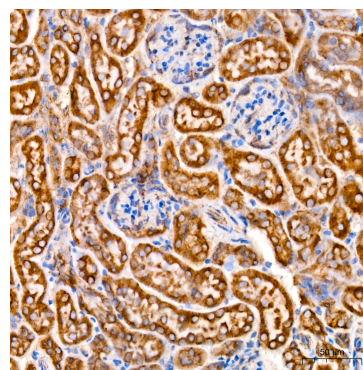
Immunohistochemistry analysis of TOMM40 in paraffin-embedded human colon carcinoma using TOMM40 Rabbit mAb (A24644) at dilution of 1:400 (40x lens). Perform high pressure antigen retrieval with 10 mM citrate buffer pH 6.0 before commencing with IHC staining protocol.



Immunohistochemistry analysis of TOMM40 in paraffin-embedded human liver using TOMM40 Rabbit mAb (A24644) at dilution of 1:400 (40x lens). Perform high pressure antigen retrieval with 10 mM citrate buffer pH 6.0 before commencing with IHC staining protocol.



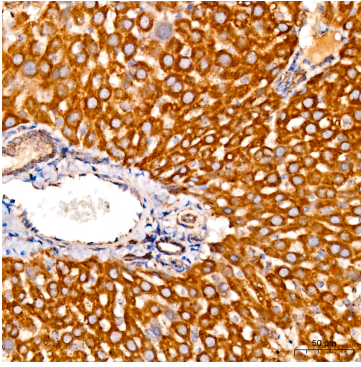
Immunohistochemistry analysis of TOMM40 in paraffin-embedded mouse colon using TOMM40 Rabbit mAb (A24644) at dilution of 1:400 (40x lens). Perform high pressure antigen retrieval with 10 mM citrate buffer pH 6.0 before commencing with IHC staining protocol.



Immunohistochemistry analysis of TOMM40 in paraffin-embedded mouse kidney using TOMM40 Rabbit mAb (A24644) at dilution of 1:400 (40x lens). Perform high pressure antigen retrieval with 10 mM citrate buffer pH 6.0 before commencing with IHC staining protocol.

## Validation Data

---



Immunohistochemistry analysis of TOMM40 in paraffin-embedded rat liver using TOMM40 Rabbit mAb (A24644) at dilution of 1:400 (40x lens). Perform high pressure antigen retrieval with 10 mM citrate buffer pH 6.0 before commencing with IHC staining protocol.