

# COUP-TFII/NR2F2 Rabbit mAb

Catalog No.: A24647

Recombinant

2 Publications

## Basic Information

### Observed MW

47kDa

### Calculated MW

46kDa

### Category

Primary antibody

### Applications

WB, IHC-P, IF/ICC, IP, ELISA

### Cross-Reactivity

Human, Mouse, Rat

### CloneNo number

ARC63406

## Background

This gene encodes a member of the steroid thyroid hormone superfamily of nuclear receptors. The encoded protein is a ligand inducible transcription factor that is involved in the regulation of many different genes. Alternate splicing results in multiple transcript variants.

## Recommended Dilutions

**WB** 1:1000 - 1:5000

**IHC-P** 1:50 - 1:200

**IF/ICC** 1:50 - 1:200

**IP** 0.5µg-4µg antibody for 200µg-400µg extracts of whole cells

**ELISA** Recommended starting concentration is 1 µg/mL. Please optimize the concentration based on your specific assay requirements.

## Contact

☎ | 400-999-6126

✉ | [cn.market@abclonal.com.cn](mailto:cn.market@abclonal.com.cn)

🌐 | [www.abclonal.com.cn](http://www.abclonal.com.cn)

## Immunogen Information

### Gene ID

7026

### Swiss Prot

P24468

### Immunogen

Synthetic peptide. This information is considered to be commercially sensitive.

### Synonyms

ARP1; ARP-1; CHTD4; NF-E3; SRXX5; SVP40; COUPTF2; COUPTFB; TFCOUP2; COUPTFII; COUP-TFII/NR2F2

## Product Information

### Source

Rabbit

### Isotype

IgG

### Purification

Affinity purification

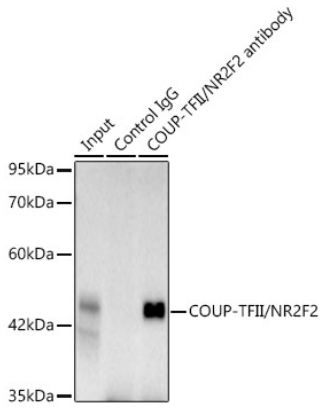
### Storage

Store at -20°C. Avoid freeze / thaw cycles.

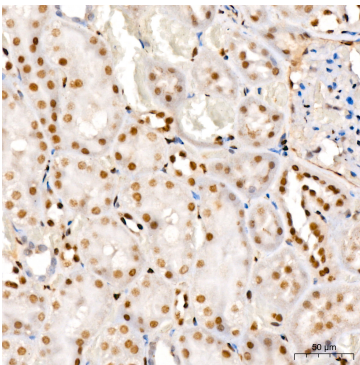
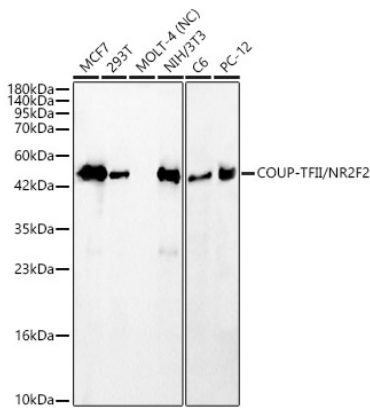
Buffer: PBS containing 50% glycerol and 0.05% BSA, preserved with proclin300 or sodium azide (as specified on the Certificate of Analysis), pH 7.3.

## Validation Data

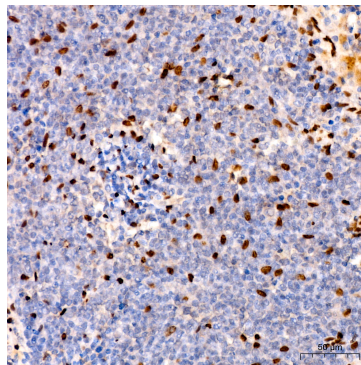
Immunoprecipitation analysis of 300ug extracts of MCF7 cells using 3ug COUP-TFII/NR2F2 antibody (A24647 1:100). Western blot was performed from the immunoprecipitate using COUP-TFII/NR2F2 antibody (A24647) at a dilution of 1:1000.



Western blot analysis of various lysates, using COUP-TFII/NR2F2 Rabbit mAb (A24647) at 1:2000 dilution. Secondary antibody: HRP-conjugated Goat anti-Rabbit IgG (H+L) (AS014) at 1:10000 dilution. Lysates/proteins: 25µg per lane. Blocking buffer: 3% nonfat dry milk in TBST. Detection: ECL Basic Kit (RM00020). Negative control (NC):MOLT-4 Exposure time: 45s.



Immunohistochemistry analysis of paraffin-embedded Rat kidney using COUP-TFII/NR2F2 Rabbit mAb (A24647) at dilution of 1:200 (40x lens). High pressure antigen retrieval performed with 0.01M Citrate buffer (pH 6.0) prior to IHC staining.



Immunohistochemistry analysis of paraffin-embedded Rat spleen using COUP-TFII/NR2F2 Rabbit mAb (A24647) at dilution of 1:200 (40x lens). High pressure antigen retrieval performed with 0.01M Citrate buffer (pH 6.0) prior to IHC staining.