

# ENPP3/CD203c Rabbit mAb

Catalog No.: A24649 **Recombinant**

## Basic Information

**Observed MW**

140kDa

**Calculated MW**

100kDa

**Category**

Primary antibody

**Applications**

ELISA, WB, IF/ICC, FC

**Cross-Reactivity**

Human

**CloneNo number**

ARC63726

## Background

The protein encoded by this gene belongs to a series of ectoenzymes that are involved in hydrolysis of extracellular nucleotides. These ectoenzymes possess ATPase and ATP pyrophosphatase activities and are type II transmembrane proteins. Expression of the related rat mRNA has been found in a subset of immature glial cells and in the alimentary tract. The corresponding rat protein has been detected in the pancreas, small intestine, colon, and liver. The human mRNA is expressed in glioma cells, prostate, and uterus. Expression of the human protein has been detected in uterus, basophils, and mast cells. Two transcript variants, one protein coding and the other non-protein coding, have been found for this gene.

## Recommended Dilutions

<b>WB</b>	1:500 - 1:1000
<b>IF/ICC</b>	1:50 - 1:200
<b>FC</b>	1:500 - 1:1000

## Immunogen Information

**Gene ID**

5169

**Swiss Prot**

O14638

**Immunogen**

Recombinant fusion protein containing a sequence corresponding to amino acids 551-875 of human ENPP3/CD203c (NP\_005012.2).

**Synonyms**

B10; NPP3; PDNP3; CD203c; PD-IBETA; ENPP3/CD203c

## Contact

	400-999-6126
	<a href="mailto:cn.market@abclonal.com.cn">cn.market@abclonal.com.cn</a>
	<a href="http://www.abclonal.com.cn">www.abclonal.com.cn</a>

## Product Information

**Source**

Rabbit

**Isotype**

IgG

**Purification**

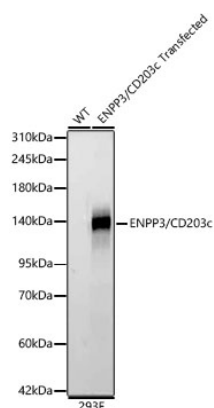
Affinity purification

**Storage**

Store at -20°C. Avoid freeze / thaw cycles.

Buffer: PBS with 0.05% proclin300, 0.05% BSA, 50% glycerol, pH7.3.

## Validation Data



Western blot analysis of lysates from wild type (WT) and 293F cells transfected with ENPP3/CD203c Rabbit pAb, using ENPP3/CD203c Rabbit pAb (A24649) at 1:1000 dilution.

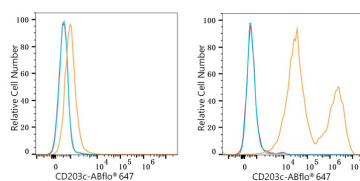
Secondary antibody: HRP Goat Anti-Rabbit IgG (H+L) (AS014) at 1:10000 dilution.

Lysates/proteins: 25ug per lane.

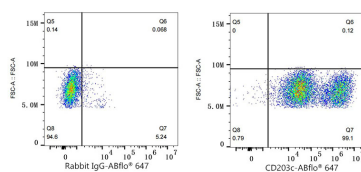
Blocking buffer: 3% nonfat dry milk in TBST.

Detection: ECL Basic Kit (RM00020).

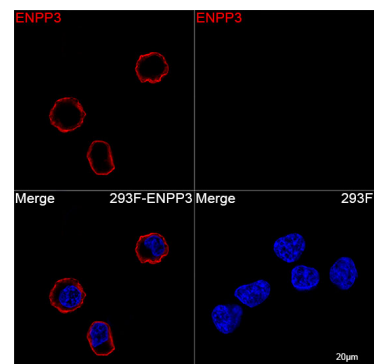
Exposure time: 30s.



Flow cytometry:  $1 \times 10^6$  293F cells (negative control, left) and 293F (Transfection, right) cells were surface-stained with ENPP3/CD203c Rabbit mAb (A24649, 2 µg/mL, orange line) or ABflo® 647 Rabbit IgG isotype control (A22070, 5 µL/Test, blue line), followed by Alexa Fluor® 647 conjugated goat anti-rabbit pAb staining. Non-fluorescently stained cells were used as blank control (red line).



Flow cytometry:  $1 \times 10^6$  293F (Transfection) cells were surface-stained with ABflo® 647 Rabbit IgG isotype control (A22070, 5 µL/Test, left) or ENPP3/CD203c Rabbit mAb (A24649, 2 µg/mL, right).



Confocal imaging of 293F cells using ENPP3/CD203c Rabbit mAb (A24649, at dilution of 1:200) (Red). DAPI was used for nuclear staining (blue). Objective: 100x.