

CRBN Rabbit mAb

Catalog No.: A24651 **Recombinant**

Basic Information

Observed MW

55kDa

Calculated MW

51kDa

Category

Primary antibody

Applications

ELISA, WB, IHC-P, IF/ICC

Cross-Reactivity

Human, Mouse, Rat

CloneNo number

ARC64184

Background

This gene encodes a protein related to the Lon protease protein family. In rodents and other mammals this gene product is found in the cytoplasm localized with a calcium channel membrane protein, and is thought to play a role in brain development. Mutations in this gene are associated with autosomal recessive nonsyndromic cognitive disability. Multiple transcript variants encoding different isoforms have been found for this gene.

Recommended Dilutions

WB	1:500 - 1:1000
IHC-P	1:50 - 1:200
IF/ICC	1:50 - 1:200

Immunogen Information

Gene ID

51185

Swiss Prot

Q96SW2

Immunogen

Recombinant fusion protein containing a sequence corresponding to amino acids 1-280 of human CRBN (NP_057386.2).

Synonyms

MRT2; MRT2A; CRBN

Contact

☎ | 400-999-6126

✉ | cn.market@abclonal.com.cn

🌐 | www.abclonal.com.cn

Product Information

Source

Rabbit

Isotype

IgG

Purification

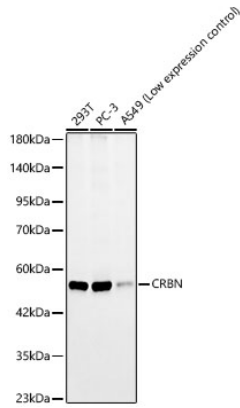
Affinity purification

Storage

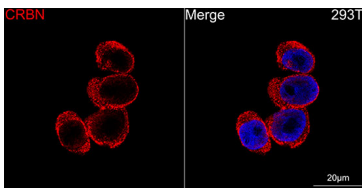
Store at -20°C. Avoid freeze / thaw cycles.

Buffer: PBS with 0.05% proclin300, 0.05% BSA, 50% glycerol, pH7.3.

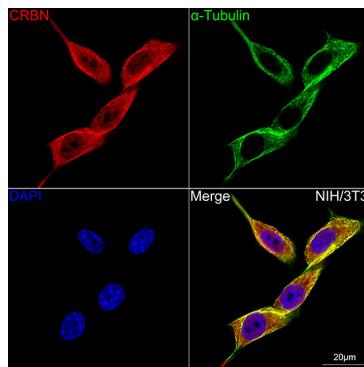
Validation Data



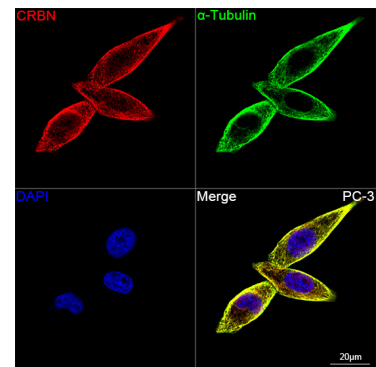
Western blot analysis of various lysates, using CRBN Rabbit mAb (A24651) at 1:1000 dilution. Secondary antibody: HRP Goat Anti-Rabbit IgG (H+L) (AS014) at 1:10000 dilution. Lysates/proteins: 25ug per lane. Blocking buffer: 3% nonfat dry milk in TBST. Detection: ECL Basic Kit (RM00020). Exposure time: 20s.



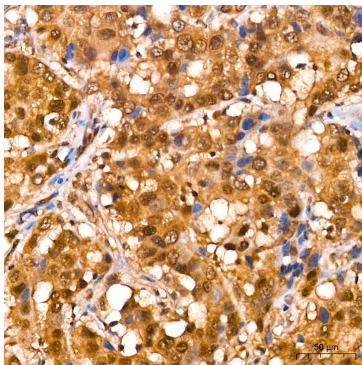
Confocal imaging of 293T cells using CRBN Rabbit mAb (A24651,dilution 1:200)(Red). DAPI was used for nuclear staining (blue). Objective: 100x.



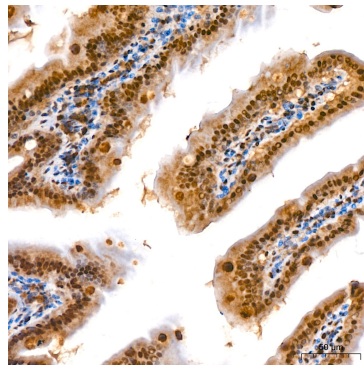
Confocal imaging of NIH/3T3 cells using CRBN Rabbit mAb (A24651,dilution 1:200)(Red). The cells were counterstained with α-Tubulin Mouse mAb (AC012,dilution 1:400) (Green). DAPI was used for nuclear staining (blue). Objective: 100x.



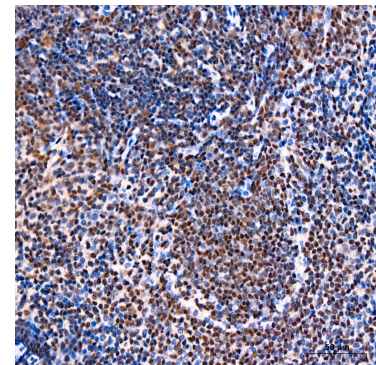
Confocal imaging of PC-3 cells using CRBN Rabbit mAb (A24651,dilution 1:200)(Red). The cells were counterstained with α-Tubulin Mouse mAb (AC012,dilution 1:400) (Green). DAPI was used for nuclear staining (blue). Objective: 100x.



Immunohistochemistry analysis of CRBN in paraffin-embedded human breast cancer using CRBN Rabbit mAb (A24651) at dilution of 1:200 (40x lens). Perform high pressure antigen retrieval with 10 mM citrate buffer pH 6.0 before commencing with IHC staining protocol.

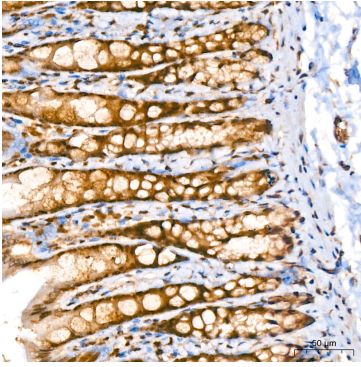


Immunohistochemistry analysis of CRBN in paraffin-embedded mouse colon using CRBN Rabbit mAb (A24651) at dilution of 1:200 (40x lens). Perform high pressure antigen retrieval with 10 mM citrate buffer pH 6.0 before commencing with IHC staining protocol.



Immunohistochemistry analysis of CRBN in paraffin-embedded mouse spleen using CRBN Rabbit mAb (A24651) at dilution of 1:200 (40x lens). Perform high pressure antigen retrieval with 10 mM citrate buffer pH 6.0 before commencing with IHC staining protocol.

Validation Data



Immunohistochemistry analysis of CRBN in paraffin-embedded rat colon using CRBN Rabbit mAb (A24651) at dilution of 1:200 (40x lens). Perform high pressure antigen retrieval with 10 mM citrate buffer pH 6.0 before commencing with IHC staining protocol.