

PITRM1 Rabbit mAb

Catalog No.: A24652 **Recombinant**

Basic Information

Observed MW

117kDa

Calculated MW

117kDa

Category

Primary antibody

Applications

ELISA, WB, IHC-P, IF/ICC

Cross-Reactivity

Human, Mouse

CloneNo number

ARC63553

Background

The protein encoded by this gene is an ATP-dependent metalloprotease that degrades post-cleavage mitochondrial transit peptides. The encoded protein binds zinc and can also degrade amyloid beta A4 protein, suggesting a possible role in Alzheimer's disease.

Recommended Dilutions

WB	1:1000 - 1:5000
IHC-P	1:100 - 1:500
IF/ICC	1:50 - 1:200

Immunogen Information

Gene ID

10531

Swiss Prot

Q5JRX3

Immunogen

Recombinant fusion protein containing a sequence corresponding to amino acids 758-1037 of human PITRM1 (NP_055704.2).

Synonyms

MP1; PreP; SCAR30; PITRM1

Contact

☎ | 400-999-6126

✉ | cn.market@abclonal.com.cn

🌐 | www.abclonal.com.cn

Product Information

Source

Rabbit

Isotype

IgG

Purification

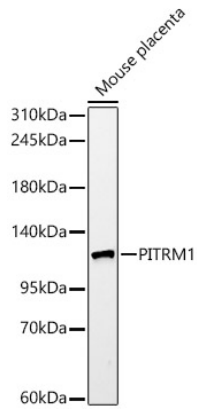
Affinity purification

Storage

Store at -20°C. Avoid freeze / thaw cycles.

Buffer: PBS with 0.05% proclin300, 0.05% BSA, 50% glycerol, pH7.3.

Validation Data



Western blot analysis of lysates from mouse placenta, using PITRM1 Rabbit mAb (A24652) at 1:2000 dilution.

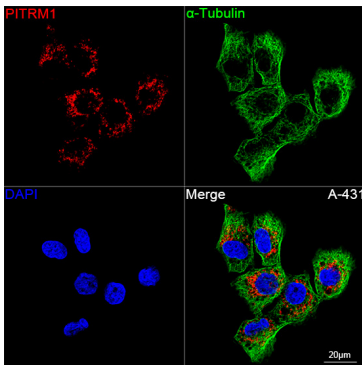
Secondary antibody: HRP Goat Anti-Rabbit IgG (H+L) (AS014) at 1:10000 dilution.

Lysates/proteins: 25ug per lane.

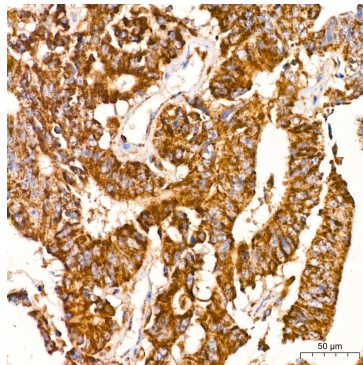
Blocking buffer: 3% nonfat dry milk in TBST.

Detection: ECL Basic Kit (RM00020).

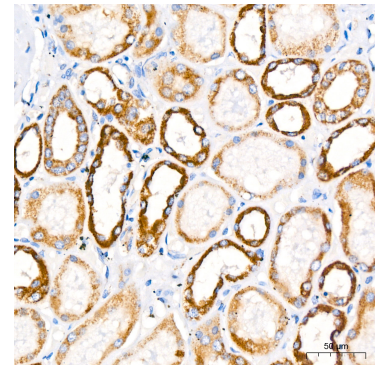
Exposure time: 90s.



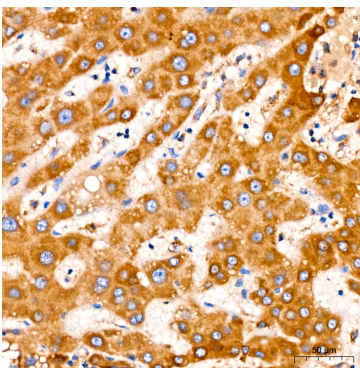
Confocal imaging of A-431 cells using PITRM1 Rabbit mAb (A24652, at dilution of 1:200) (Red). The cells were counterstained with α -Tubulin Mouse mAb (AC012, dilution 1:400) (Green). DAPI was used for nuclear staining (blue). Objective: 1000x.



Immunohistochemistry analysis of PITRM1 in paraffin-embedded human colon carcinoma using PITRM1 Rabbit mAb (A24652) at dilution of 1:300 (40x lens). Perform high pressure antigen retrieval with 10 mM citrate buffer pH 6.0 before commencing with IHC staining protocol.



Immunohistochemistry analysis of PITRM1 in paraffin-embedded human kidney using PITRM1 Rabbit mAb (A24652) at dilution of 1:300 (40x lens). Perform high pressure antigen retrieval with 10 mM citrate buffer pH 6.0 before commencing with IHC staining protocol.



Immunohistochemistry analysis of PITRM1 in paraffin-embedded human liver using PITRM1 Rabbit mAb (A24652) at dilution of 1:300 (40x lens). Perform high pressure antigen retrieval with 10 mM citrate buffer pH 6.0 before commencing with IHC staining protocol.