

Human IgG4/Immunoglobulin heavy constant gamma 4 Rabbit pAb

Catalog No.: A24655

Basic Information

Observed MW

36kDa

Calculated MW

44kDa

Category

Primary antibody

Applications

ELISA, WB

Cross-Reactivity

Human

Background

Immunoglobulin G (IgG), is one of the most abundant protein in human serum with normal levels between 8-17 mg/ml in adult blood. IgG is important for our defence against microorganisms and the molecules are produced by B-lymphocytes as a part of our adaptive immune response. The IgG molecule has two separate functions; to bind to the pathogen that elicited the response and to recruit other cells and molecules to destroy the antigen. The variability of the IgG pool is generated by somatic recombination and the number of specificities in an individual at a given time point is estimated to be 1011 variants.

Recommended Dilutions

WB 1:500 - 1:1000

Immunogen Information

Gene ID

Swiss Prot

P01861

Immunogen

A synthetic peptide corresponding to a sequence within amino acids 50-150 of human IgG4/Immunoglobulin heavy constant gamma 4 (P01861).

Synonyms

IGHG4; Ig gamma-4 chain C region; Human IgG4/Immunoglobulin heavy constant gamma 4

Contact

☎ | 400-999-6126

✉ | cn.market@abclonal.com.cn

🌐 | www.abclonal.com.cn

Product Information

Source

Rabbit

Isotype

IgG

Purification

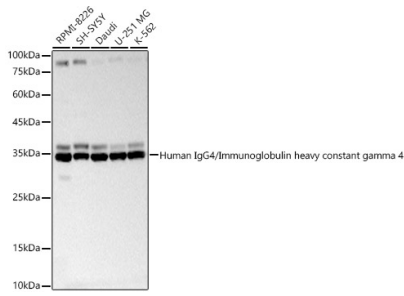
Affinity purification

Storage

Store at -20°C. Avoid freeze / thaw cycles.

Buffer: PBS with 0.05% proclin300, 50% glycerol, pH7.3.

Validation Data



Western blot analysis of various lysates, using Human IgG4/Immunoglobulin heavy constant gamma 4 Rabbit pAb (A24655) at 1:1000 dilution.
Secondary antibody: HRP Goat Anti-Rabbit IgG (H+L) (AS014) at 1:10000 dilution.
Lysates/proteins: 25ug per lane.
Blocking buffer: 3% nonfat dry milk in TBST.
Detection: ECL Basic Kit (RM00020).
Exposure time: 30s.