

VEGFR2/KDR/Flk-1/CD309 Rabbit pAb

Catalog No.: A24671

Basic Information

Observed MW

230kDa

Calculated MW

150kDa

Category

Primary antibody

Applications

ELISA, WB

Cross-Reactivity

Mouse

Background

Enables growth factor binding activity and vascular endothelial growth factor-activated receptor activity. Involved in several processes, including circulatory system development; peptidyl-tyrosine autophosphorylation; and positive regulation of vasculogenesis. Acts upstream of or within several processes, including animal organ development; positive regulation of cell population proliferation; and vasculature development. Located in several cellular components, including cell junction; endosome; and external side of plasma membrane. Is expressed in several structures, including alimentary system; cardiovascular system; central nervous system; extraembryonic component; and genitourinary system. Human ortholog(s) of this gene implicated in several diseases, including adhesions of uterus; artery disease (multiple); gastrointestinal system cancer (multiple); macular degeneration (multiple); and pancreatic cancer (multiple). Orthologous to human KDR (kinase insert domain receptor).

Recommended Dilutions

WB 1:500 - 1:1000

Immunogen Information

Gene ID

16542

Swiss Prot

P35918

Immunogen

Recombinant fusion protein containing a sequence corresponding to amino acids 20-762 of mouse VEGFR2/KDR/Flk-1/CD309(NP_034742.2).

Synonyms

orv; Flk1; Ly73; Flk-1; Krd-1; VEGFR2; VEGFR-2; sVEGFR-2; 6130401C07; VEGFR2/KDR/Flk-1/CD309

Contact

☎ | 400-999-6126

✉ | cn.market@abclonal.com.cn

🌐 | www.abclonal.com.cn

Product Information

Source

Rabbit

Isotype

IgG

Purification

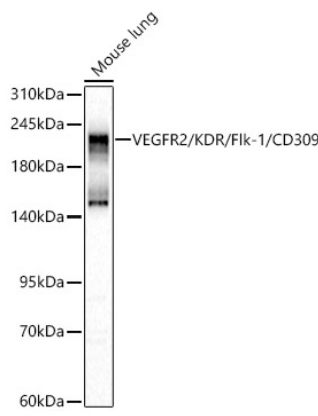
Affinity purification

Storage

Store at -20°C. Avoid freeze / thaw cycles.

Buffer: PBS with 0.05% proclin300, 50% glycerol, pH7.3.

Validation Data



Western blot analysis of lysates from Mouse lung, using VEGFR2/KDR/Fik-1/CD309 Rabbit pAb (A24671) at 1:1000 dilution.
Secondary antibody: HRP Goat Anti-Rabbit IgG (H+L) (AS014) at 1:10000 dilution.
Lysates/proteins: 25ug per lane.
Blocking buffer: 3% nonfat dry milk in TBST.
Detection: ECL Basic Kit (RM00020).
Exposure time: 60s.