

# ABflo® 594 Rabbit anti-Monkey IgE mAb

Catalog No.: A24674

## Basic Information

### Observed MW

### Calculated MW

### Category

Primary antibody

### Applications

FC

### Cross-Reactivity

Cynomolgus monkey

### CloneNo number

ARC61153

### Conjugate

ABflo® 594. Ex:588nm. Em:604nm.

## Background

IgE is the class of antibodies produced in the lungs, skin, and mucous membranes. It may protect against parasite invasion, but it is a major factor in allergic reactions. The antigen-specific IgE interacts with mast cells and eosinophils, triggers the release of histamine, leukotrienes and other substances that lead to the itching, sneezing and congestion of allergies - and the life threatening respiratory distress of asthma and anaphylactic shock.

## Recommended Dilutions

**FC** 0.2µg per 10<sup>6</sup> cells in  
100 µl volume

**Concentration** 0.25 mg/mL

## Immunogen Information

### Gene ID

### Swiss Prot

### Immunogen

Recombinant protein (or fragment). This information is considered to be commercially sensitive.

### Synonyms

IgE; IGHE

## Contact

☎ | 400-999-6126

✉ | [cn.market@abclonal.com.cn](mailto:cn.market@abclonal.com.cn)

🌐 | [www.abclonal.com.cn](http://www.abclonal.com.cn)

## Product Information

### Source

Rabbit

### Isotype

IgG

### Purification

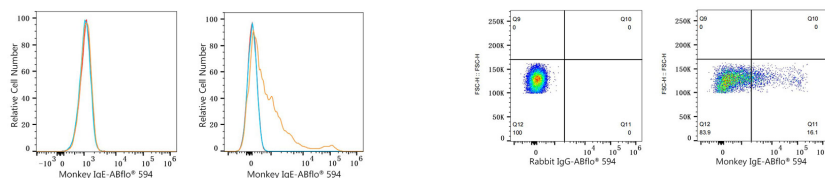
Affinity purification

### Storage

Store at -20°C. Avoid freeze.

Buffer: PBS containing 50% glycerol and 0.2% BSA, preserved with proclin300 or sodium azide (as specified on the Certificate of Analysis), pH 7.3.

## Validation Data



Flow cytometry:  $1 \times 10^6$  HeLa cells (negative control, left) and Monkey PBMC (right) were surface-stained with ABflo® 594 Rabbit anti-Cynomolgus Monkey IgE mAb (ARC61153-01-ABf594, 2  $\mu\text{g/mL}$ , orange line) or ABflo® 594 Rabbit IgG isotype control (A23821, 2  $\mu\text{g/mL}$ , blue line). Non-fluorescently stained cells were used as blank control (red line).

Flow cytometry:  $1 \times 10^6$  Monkey PBMC were surface-stained with ABflo® 594 Rabbit IgG isotype control (A23821, 2  $\mu\text{g/mL}$ , left) or ABflo® 594 Rabbit anti-Cynomolgus Monkey IgE mAb (ARC61153-01-ABf594, 2  $\mu\text{g/mL}$ , right).