

# ABflo® 647 Rabbit anti-Mouse IL-12 p40 mAb

Catalog No.: A24679

## Basic Information

### Observed MW

### Calculated MW

38kDa

### Category

Primary antibody

### Applications

FC (intra)

### Cross-Reactivity

Mouse

### CloneNo number

ARC63198-ABflo647

### Conjugate

ABflo® 647. Ex:648nm. Em:664nm.

## Recommended Dilutions

**FC (intra)**     5 µl per  $10^6$  cells in  
                        100 µl volume

## Background

This gene encodes the beta subunit p40 of the Interleukin 12 (IL-12) family of cytokines. Members of the IL-12 family form heterodimers consisting of heavy and light subunits linked by disulfide bonds. The product of this gene, p40, is a subunit of interleukins IL-12 and IL-23.

## Immunogen Information

### Gene ID

16160

### Swiss Prot

P43432

### Immunogen

Recombinant fusion protein containing a sequence corresponding to amino acids 23-335 of mouse IL-12 p40(NP\_001290173.1).

### Synonyms

p40; IL-12b; IL12p40; IL-12p40

## Contact

☎ | 400-999-6126

✉ | [cn.market@abclonal.com.cn](mailto:cn.market@abclonal.com.cn)

🌐 | [www.abclonal.com.cn](http://www.abclonal.com.cn)

## Product Information

### Source

Rabbit

### Isotype

IgG

### Purification

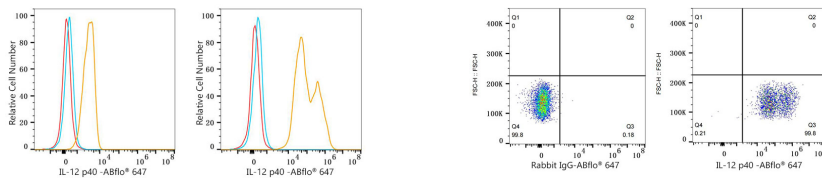
Affinity purification

### Storage

Store at 2-8°C. Avoid freeze.

Buffer: PBS with 0.03% proclin300,0.2% BSA,pH7.3.

## Validation Data



Flow cytometry:  $1 \times 10^6$  293T cells (negative control, left) and 293T (Transfection, right) cells were intracellularly-stained with ABflo® 647 Rabbit anti-Mouse IL-12 p40 mAb (A24679, 5  $\mu$ l/Test, orange line) or ABflo® 647 Rabbit IgG isotype control (A22070, 5  $\mu$ l/Test, blue line). Non-fluorescently stained cells were used as blank control (red line).

Flow cytometry:  $1 \times 10^6$  293T (Transfection) cells were intracellularly-stained with ABflo® 647 Rabbit IgG isotype control (A22070, 5  $\mu$ l/Test, left) or ABflo® 647 Rabbit anti-Mouse IL-12 p40 mAb (A24679, 5  $\mu$ l/Test, right).