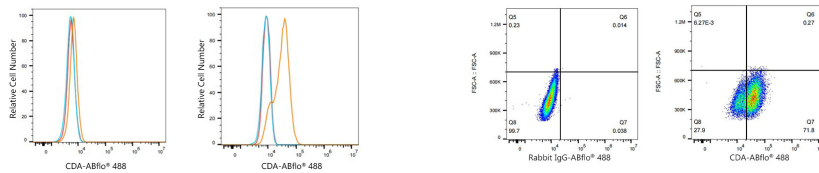


Validation Data



Flow cytometry: 1×10^6 HEL cells (negative control, left) and HeLa cells (right) were intracellularly-stained with ABflo® 488 Rabbit anti-Human CDA mAb (A24685,5 $\mu\text{l}/\text{Test}$, orange line) or ABflo® 488 Rabbit IgG isotype control (A22069,5 $\mu\text{l}/\text{Test}$, blue line). Non-fluorescently stained cells were used as blank control (red line).

Flow cytometry: 1×10^6 HeLa cells were intracellularly-stained with ABflo® 488 Rabbit IgG isotype control (A22069,5 $\mu\text{l}/\text{Test}$, left) or ABflo® 488 Rabbit anti-Human CDA mAb (A24685,5 $\mu\text{l}/\text{Test}$, right).