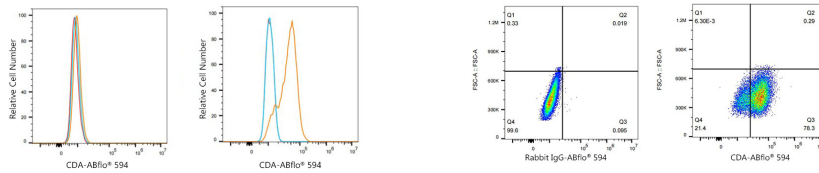


Validation Data



Flow cytometry: 1×10^6 HEL cells (negative control, left) and HeLa cells (right) were intracellularly-stained with ABflo® 594 Rabbit anti-Human CDA mAb (A24686, 5 μ l/Test, orange line) or ABflo® 594 Rabbit IgG isotype control (A23821, 2 μ g/mL, blue line). Non-fluorescently stained cells were used as blank control (red line).

Flow cytometry: 1×10^6 HeLa cells were intracellularly-stained with ABflo® 594 Rabbit IgG isotype control (A23821, 2 μ g/mL, left) or ABflo® 594 Rabbit anti-Human CDA mAb (A24686, 5 μ l/Test, right).