

# ABflo® 647 Rabbit anti-Human CDA mAb

Catalog No.: A24687

## Basic Information

### Observed MW

Refer to figures

### Calculated MW

16kDa

### Category

Primary antibody

### Applications

FC (intra)

### Cross-Reactivity

Human

### CloneNo number

ARC63546-ABflo647

### Conjugate

ABflo® 647, Ex:648nm, Em:664nm.

## Recommended Dilutions

**FC (intra)**      5 µl per 10<sup>6</sup> cells in  
                            100 µl volume

## Background

This gene encodes an enzyme involved in pyrimidine salvaging. The encoded protein forms a homotetramer that catalyzes the irreversible hydrolytic deamination of cytidine and deoxycytidine to uridine and deoxyuridine, respectively. It is one of several deaminases responsible for maintaining the cellular pyrimidine pool. Mutations in this gene are associated with decreased sensitivity to the cytosine nucleoside analogue cytosine arabinoside used in the treatment of certain childhood leukemias.

## Immunogen Information

### Gene ID

978

### Swiss Prot

P32320

### Immunogen

Recombinant fusion protein containing a sequence corresponding to amino acids 1-146 of human CDA(NP\_001776.1).

### Synonyms

CDD

## Contact

 | 400-999-6126

 | [cn.market@abclonal.com.cn](mailto:cn.market@abclonal.com.cn)

 | [www.abclonal.com.cn](http://www.abclonal.com.cn)

## Product Information

### Source

Rabbit

### Isotype

IgG

### Purification

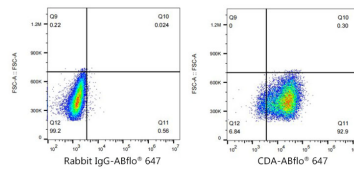
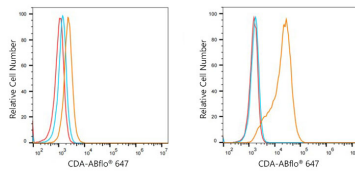
Affinity purification

### Storage

Store at 2-8°C. Avoid freeze.

Buffer: PBS with 0.03% proclin300, 0.2% BSA, pH7.3.

## Validation Data



Flow cytometry:  $1 \times 10^6$  HEL cells (negative control, left) and HeLa cells (right) were intracellularly-stained with ABflo® 647 Rabbit anti-Human CDA mAb (A24687, 5  $\mu$ l/Test, orange line) or ABflo® 647 Rabbit IgG isotype control (A22070, 2  $\mu$ g/mL, blue line). Non-fluorescently stained cells were used as blank control (red line).

Flow cytometry:  $1 \times 10^6$  HeLa cells were intracellularly-stained with ABflo® 647 Rabbit IgG isotype control (A22070, 2  $\mu$ g/mL, left) or ABflo® 647 Rabbit anti-Human CDA mAb (A24687, 5  $\mu$ l/Test, right).