

# ABflo® 488 Rabbit anti-Human CD35 mAb

Catalog No.: A24697

## Basic Information

### Observed MW

### Calculated MW

223kDa

### Category

Primary antibody

### Applications

FC

### Cross-Reactivity

Human

### CloneNo number

ARC63486-ABflo488

### Conjugate

ABflo® 488. Ex:491nm. Em:516nm.

## Recommended Dilutions

FC 5 µl per 10<sup>6</sup> cells in  
100 µl volume

## Background

Complement receptor type 1 (CR1/CD35) is a type I transmembrane glycoprotein that is expressed on the surface of B cells, neutrophils, monocytes, and renal podocytes. As a component of the host's innate immune system, CR1/CD35 expressed on neutrophils and monocytes binds to ligands coated with complement opsonins C3b and C4b, thereby promoting phagocytosis and pro-inflammatory cytokine production. CR1/CD35 also participates in negative regulation of the complement cascade through its ability to promote dissociation of C3 and C5 convertases and by serving as one of multiple cofactors for factor-I-mediated cleavage and inactivation of C3b and C4b.

## Immunogen Information

### Gene ID

1378

### Swiss Prot

P17927

### Immunogen

Recombinant fusion protein containing a sequence corresponding to amino acids 901-1095 of human CD35 (NP\_000564.2).

### Synonyms

CR1; C3BR; C4BR; CD35; KN; complement receptor type 1

## Contact

☎ | 400-999-6126

✉ | [cn.market@abclonal.com.cn](mailto:cn.market@abclonal.com.cn)

🌐 | [www.abclonal.com.cn](http://www.abclonal.com.cn)

## Product Information

### Source

Rabbit

### Isotype

IgG

### Purification

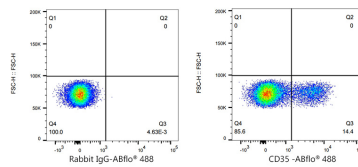
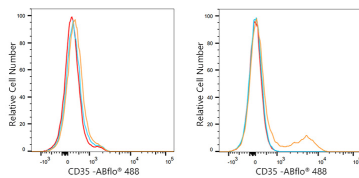
Affinity purification

### Storage

Store at 2-8°C. Avoid freeze.

Buffer: PBS with 0.03% proclin300,0.2% BSA,pH7.3.

## Validation Data



Flow cytometry:  $1 \times 10^6$  REH cells (negative control, left) and Human PBMC (right) were surface-stained with ABflo® 488 Rabbit anti-Human CD35 mAb (A24697, 5  $\mu$ l/Test, orange line) or ABflo® 488 Rabbit IgG isotype control (A22069, 5  $\mu$ l/Test, blue line). Non-fluorescently stained cells were used as blank control (red line).

Flow cytometry:  $1 \times 10^6$  Human PBMC were surface-stained with ABflo® 488 Rabbit IgG isotype control (A22069, 5  $\mu$ l/Test, left) or ABflo® 488 Rabbit anti-Human CD35 mAb (A24697, 5  $\mu$ l/Test, right).