

ABflo® 647 Rabbit anti-Human CD300F/IREM-1 mAb

Catalog No.: A24705

Basic Information

Observed MW

Calculated MW

18kDa/21kDa/26kDa/32kDa

Category

Primary antibody

Applications

FC

Cross-Reactivity

Human

CloneNo number

ARC63892

Conjugate

ABflo® 647. Ex:648nm. Em:664nm.

Recommended Dilutions

FC 5 µl per 10⁶ cells in
100 µl volume

Background

This gene encodes a member of the CD300 protein family. Members of this family are cell surface glycoproteins with a single IgV-like extracellular domain, and are involved in the regulation of immune response. The encoded protein is an inhibitory receptor. Alternative splicing results in multiple transcript variants.

Immunogen Information

Gene ID

146722

Swiss Prot

Q8TDQ1

Immunogen

Recombinant protein (or fragment). This information is considered to be commercially sensitive.

Synonyms

CD300LF; CD300f; CLM-1; CLM1; IREM-1; IREM1; IgSF13; LMIR3; NKIR; CMRF35-like molecule 1

Contact

☎ | 400-999-6126

✉ | cn.market@abclonal.com.cn

🌐 | www.abclonal.com.cn

Product Information

Source

Rabbit

Isotype

IgG

Purification

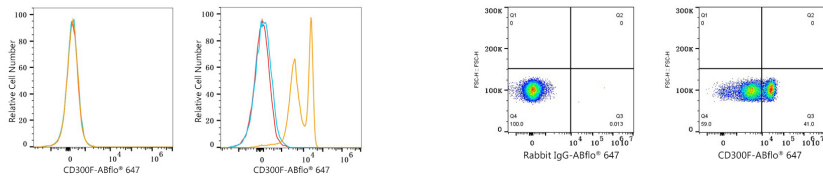
Affinity purification

Storage

Store at 2-8°C. Avoid freeze.

Buffer: PBS containing 0.2% BSA, preserved with proclin300 or sodium azide (as specified on the Certificate of Analysis), pH 7.3.

Validation Data



Flow cytometry: 1X10⁶ K-562 cells (negative control, left) and Human PBMC (right) were surface-stained with ABflo® 647 Rabbit anti-Human CD300F/IREM-1 mAb (A24705, 5 µl/Test, orange line) or ABflo® 647 Rabbit IgG isotype control (A22070, 5 µl/Test, blue line). Non-fluorescently stained cells were used as blank control (red line).

Flow cytometry: 1X10⁶ Human PBMC were surface-stained with ABflo® 647 Rabbit IgG isotype control (A22070, 5 µl/Test, left) or ABflo® 647 Rabbit anti-Human CD300F/IREM-1 mAb (A24705, 5 µl/Test, right).