

# ABflo® 594 Rabbit anti-Human CD300F/IEM-1 mAb

Catalog No.: A24706

## Basic Information

### Observed MW

### Calculated MW

18kDa/21kDa/26kDa/32kDa

### Category

Primary antibody

### Applications

FC

### Cross-Reactivity

Human

### CloneNo number

ARC63892-ABflo594

### Conjugate

ABflo® 594. Ex:588nm. Em:604nm.

## Recommended Dilutions

FC 5 µl per 10<sup>6</sup> cells in  
100 µl volume

## Background

This gene encodes a member of the CD300 protein family. Members of this family are cell surface glycoproteins with a single IgV-like extracellular domain, and are involved in the regulation of immune response. The encoded protein is an inhibitory receptor. Alternative splicing results in multiple transcript variants.

## Immunogen Information

### Gene ID

146722

### Swiss Prot

Q8TDQ1

### Immunogen

Recombinant fusion protein containing a sequence corresponding to amino acids 20-156 of human CD300F/IEM-1 (NP\_620587.2).

### Synonyms

CD300LF; CD300f; CLM-1; CLM1; IEM-1; IEM1; IgSF13; LMIR3; NKIR; CMRF35-like molecule 1

## Contact

 | 400-999-6126

 | [cn.market@abclonal.com.cn](mailto:cn.market@abclonal.com.cn)

 | [www.abclonal.com.cn](http://www.abclonal.com.cn)

## Product Information

### Source

Rabbit

### Isotype

IgG

### Purification

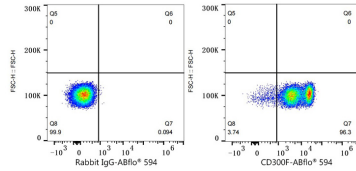
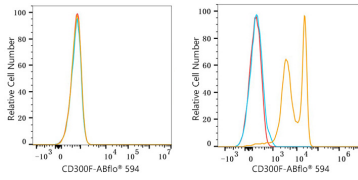
Affinity purification

### Storage

Store at 2-8°C. Avoid freeze.

Buffer: PBS with 0.03% proclin300,0.2% BSA,pH7.3.

## Validation Data



Flow cytometry: 1X10<sup>6</sup> K-562 cells (negative control, left) and Human PBMC (right) were surface-stained with ABflo® 594 Rabbit anti-Human CD300F/IREM-1 mAb (A24706,5 µl/Test, orange line) or ABflo® 594 Rabbit IgG isotype control (A23821,5 µl/Test, blue line). Non-fluorescently stained cells were used as blank control (red line).

Flow cytometry: 1X10<sup>6</sup> Human PBMC were surface-stained with ABflo® 594 Rabbit IgG isotype control (A23821,5 µl/Test, left) or ABflo® 594 Rabbit anti-Human CD300F/IREM-1 mAb (A24706,5 µl/Test, right).