

ABflo® 594 Rabbit anti-Human CD2 mAb

Catalog No.: A24708

Basic Information

Observed MW

Refer to figures

Calculated MW

39kDa

Category

Primary antibody

Applications

FC

Cross-Reactivity

Human

CloneNo number

ARC59333-ABflo594

Conjugate

ABflo® 594. Ex:588nm. Em:604nm.

Recommended Dilutions

FC 5 µl per 10⁶ cells in
100 µl volume

Background

The protein encoded by this gene is a surface antigen found on all peripheral blood T-cells. The encoded protein interacts with LFA3 (CD58) on antigen presenting cells to optimize immune recognition. A locus control region (LCR) has been found in the 3' flanking sequence of this gene. [provided by RefSeq, Jun 2016]

Immunogen Information

Gene ID

914

Swiss Prot

P06729

Immunogen

Recombinant fusion protein containing a sequence corresponding to amino acids 25-209 of human CD2 (NP_001758.2).

Synonyms

CD2; LFA-2; SRBC; T11; CD2 molecule

Contact

 | 400-999-6126

 | cn.market@abclonal.com.cn

 | www.abclonal.com.cn

Product Information

Source

Rabbit

Isotype

IgG

Purification

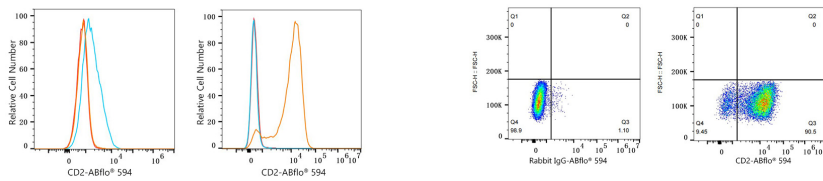
Affinity purification

Storage

Store at 2-8°C. Avoid freeze.

Buffer: PBS with 0.03% proclin300,0.2% BSA,pH7.3.

Validation Data



Flow cytometry: 1×10^6 K-562 cells (negative control, left) and Jurkat cells (right) were surface-stained with ABflo® 594 Rabbit anti-Human CD2 mAb (A24708, 5 $\mu\text{l}/\text{Test}$, orange line) or ABflo® 594 Rabbit IgG isotype control (A23821, 5 $\mu\text{l}/\text{Test}$, blue line). Non-fluorescently stained cells were used as blank control (red line).

Flow cytometry: 1×10^6 Jurkat cells were surface-stained with ABflo® 594 Rabbit IgG isotype control (A23821, 5 $\mu\text{l}/\text{Test}$, left) or ABflo® 594 Rabbit anti-Human CD2 mAb (A24708, 5 $\mu\text{l}/\text{Test}$, right).