

ABflo® 594 Rabbit anti-Human CD64 mAb

Catalog No.: A24710

Basic Information

Observed MW

Refer to figures

Calculated MW

38kDa/42kDa

Category

Primary antibody

Applications

FC

Cross-Reactivity

Human

CloneNo number

ARC53680-ABf594

Conjugate

ABflo® 594. Ex:588nm. Em:604nm.

Recommended Dilutions

FC 5 µl per 10⁶ cells in
 100 µl volume

Background

This gene encodes a protein that plays an important role in the immune response. This protein is a high-affinity Fc-gamma receptor. The gene is one of three related gene family members located on chromosome 1.

Immunogen Information

Gene ID

2209

Swiss Prot

P12314

Immunogen

Recombinant fusion protein containing a sequence corresponding to amino acids 16-288 of human CD64 (NP_000557.1).

Synonyms

FCGR1A; CD64; CD64A; FCRI; IGFR1; Fc fragment of IgG receptor Ia

Contact

 | 400-999-6126

 | cn.market@abclonal.com.cn

 | www.abclonal.com.cn

Product Information

Source

Rabbit

Isotype

IgG

Purification

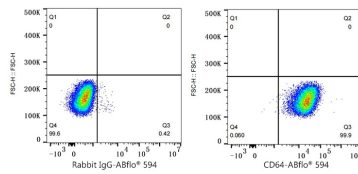
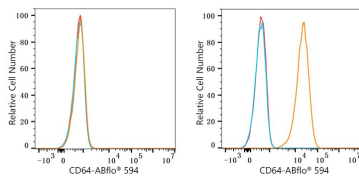
Affinity purification

Storage

Store at 2-8°C. Avoid freeze.

Buffer: PBS with 0.03% proclin300,0.2% BSA,pH7.3.

Validation Data



Flow cytometry: 1X10⁶ K-562 cells (negative control, left) and THP-1 cells (right) were surface-stained with ABflo® 594 Rabbit anti-Human CD64 mAb (A24710,5 µl/Test, orange line) or ABflo® 594 Rabbit IgG isotype control (A23821,5 µl/Test, blue line). Non-fluorescently stained cells were used as blank control (red line).

Flow cytometry: 1X10⁶ THP-1 cells were surface-stained with ABflo® 594 Rabbit IgG isotype control (A23821,5 µl/Test, left) or ABflo® 594 Rabbit anti-Human CD64 mAb (A24710,5 µl/Test, right).