

ILT5/CD85a Rabbit mAb

Catalog No.: A24714 **Recombinant**

Basic Information

Observed MW

Refer to figures

Calculated MW

69kDa/71kDa

Category

Primary antibody

Applications

ELISA,FC

Cross-Reactivity

Human

CloneNo number

ARC64515

Background

This gene is a member of the leukocyte immunoglobulin-like receptor (LIR) family, which is found in a gene cluster at chromosomal region 19q13.4. The encoded protein belongs to the subfamily B class of LIR receptors which contain two or four extracellular immunoglobulin domains, a transmembrane domain, and two to four cytoplasmic immunoreceptor tyrosine-based inhibitory motifs (ITIMs). The receptor is expressed on immune cells where it binds to MHC class I molecules on antigen-presenting cells and transduces a negative signal that inhibits stimulation of an immune response. It is thought to control inflammatory responses and cytotoxicity to help focus the immune response and limit autoreactivity. Multiple transcript variants encoding different isoforms have been found for this gene.

Recommended Dilutions

FC 1:200 - 1:500

Immunogen Information

Gene ID

11025

Swiss Prot

O75022

Immunogen

Recombinant fusion protein containing a sequence corresponding to amino acids 24-418 of human ILT5/CD85a (NP_006855.3).

Synonyms

LILRB3; CD85A; HL9; ILT-5; ILT5; LILRA6; LIR-3; LIR3; PIR-B; PIRB; leukocyte immunoglobulin like receptor B3; ILT5/CD85a

Contact

☎ | 400-999-6126

✉ | cn.market@abclonal.com.cn

🌐 | www.abclonal.com.cn

Product Information

Source

Rabbit

Isotype

IgG

Purification

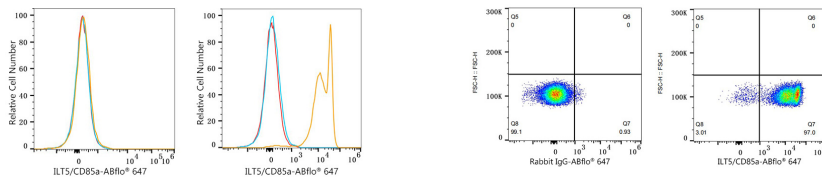
Affinity purification

Storage

Store at -20°C. Avoid freeze / thaw cycles.

Buffer: PBS with 0.05% proclin300,0.05% BSA,50% glycerol,pH7.3.

Validation Data



Flow cytometry: 1×10^6 K-562 cells (negative control, left) and Human PBMC (right) were surface-stained with ILT5/CD85a Rabbit mAb (A24714, 2 $\mu\text{g}/\text{mL}$, orange line) or ABflo® 647 Rabbit IgG isotype control (A22070, 2 $\mu\text{g}/\text{mL}$, blue line), followed by Alexa Fluor® 647 conjugated goat anti-rabbit pAb staining. Non-fluorescently stained cells were used as blank control (red line).

Flow cytometry: 1×10^6 Human PBMC were surface-stained with ABflo® 647 Rabbit IgG isotype control (A22070, 2 $\mu\text{g}/\text{mL}$, left) or ILT5/CD85a Rabbit mAb (A24714, 2 $\mu\text{g}/\text{mL}$, right).