

ABflo® 594 Rabbit anti-Human Megalin/LRP2 mAb

Catalog No.: A24717

Basic Information

Observed MW**Calculated MW**

521kDa

Category

Primary antibody

Applications

FC (intra)

Cross-Reactivity

Human

CloneNo number

ARC63830-ABflo594

Conjugate

ABflo® 594. Ex:588nm. Em:604nm.

Recommended Dilutions

FC (intra) 5µl per 10⁶ cells in 100 µl volume.

Background

The protein encoded by this gene, low density lipoprotein-related protein 2 (LRP2) or megalin, is a multi-ligand endocytic receptor that is expressed in many different tissues but primarily in absorptive epithelial tissues such as the kidney. This glycoprotein has a large amino-terminal extracellular domain, a single transmembrane domain, and a short carboxy-terminal cytoplasmic tail. The extracellular ligand-binding-domains bind diverse macromolecules including albumin, apolipoproteins B and E, and lipoprotein lipase. The LRP2 protein is critical for the reuptake of numerous ligands, including lipoproteins, sterols, vitamin-binding proteins, and hormones. This protein also has a role in cell-signaling; extracellular ligands include parathyroid hormones and the morphogen sonic hedgehog while cytosolic ligands include MAP kinase scaffold proteins and JNK interacting proteins. Recycling of this membrane receptor is regulated by phosphorylation of its cytoplasmic domain. Mutations in this gene cause Donnai-Barrow syndrome (DBS) and facio-oculoacoustico-renal syndrome (FOAR).

Immunogen Information

Gene ID

4036

Swiss Prot

P98164

Immunogen

Recombinant fusion protein containing a sequence corresponding to amino acids 4446-4655 of human Megalin/LRP2 (NP_004516.2).

Synonyms

LRP2; DBS; GP330; LDL receptor related protein 2

Contact

 | 400-999-6126 | cn.market@abclonal.com.cn | www.abclonal.com.cn

Product Information

Source

Rabbit

Isotype

IgG

Purification

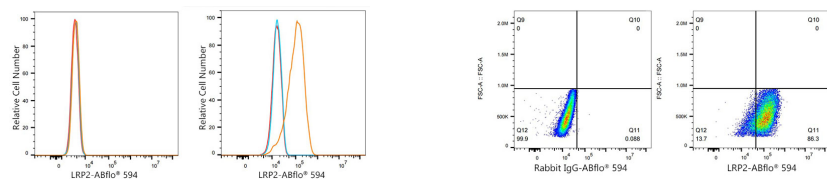
Affinity purification

Storage

Store at 2-8°C. Avoid freeze.

Buffer: PBS with 0.03% proclin300,0.2% BSA,pH7.3.

Validation Data



Flow cytometry: 1×10^6 Reh cells (Low Expression, left) and Caco-2 (right) cells were intracellularly-stained with ABflo® 594 Rabbit anti-Human Megalin/LRP2 mAb (A24717,5 μ l/Test, orange line) or ABflo® 594 Rabbit IgG isotype control (A23821,5 μ l/Test, blue line). Non-fluorescently stained cells were used as blank control (red line).

Flow cytometry: 1×10^6 Caco-2 cells were intracellularly-stained with ABflo® 594 Rabbit IgG isotype control (A23821,5 μ l/Test, left) or ABflo® 594 Rabbit anti-Human Megalin/LRP2 mAb (A24717,5 μ l/Test, right).