

PCPE-1 Rabbit mAb

Catalog No.: A24732 **Recombinant**

Basic Information

Observed MW

48kDa

Calculated MW

48kDa

Category

Primary antibody

Applications

ELISA, WB

Cross-Reactivity

Human, Mouse, Rat

CloneNo number

ARC63882

Background

Fibrillar collagen types I-III are synthesized as precursor molecules known as procollagens. These precursors contain amino- and carboxyl-terminal peptide extensions known as N- and C-propeptides, respectively, which are cleaved, upon secretion of procollagen from the cell, to yield the mature triple helical, highly structured fibrils. This gene encodes a glycoprotein which binds and drives the enzymatic cleavage of type I procollagen and heightens C-proteinase activity.

Recommended Dilutions

WB 1:500 - 1:1000

Immunogen Information

Gene ID

5118

Swiss Prot

Q15113

Immunogen

Recombinant fusion protein containing a sequence corresponding to amino acids 304-449 of human TLR4 (NP_002584.2).

Synonyms

PCPE; PCPE1; PCPE-1

Contact

☎ | 400-999-6126

✉ | cn.market@abclonal.com.cn

🌐 | www.abclonal.com.cn

Product Information

Source

Rabbit

Isotype

IgG

Purification

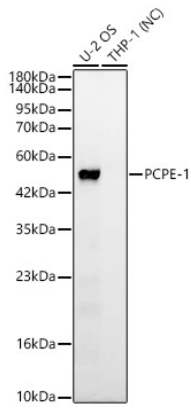
Affinity purification

Storage

Store at -20°C. Avoid freeze / thaw cycles.

Buffer: PBS with 0.05% proclin300, 0.05% BSA, 50% glycerol, pH7.3.

Validation Data



Western blot analysis of various lysates, using PCPE-1 Rabbit mAb (A24732) at 1:1000 dilution.
Secondary antibody: HRP Goat Anti-Rabbit IgG (H+L) (AS014) at 1:10000 dilution.
Lysates/proteins: 25ug per lane.
Blocking buffer: 3% nonfat dry milk in TBST.
Detection: ECL Basic Kit (RM00020).
Negative control (NC): THP-1
Exposure time: 30s.