

IL4 Rabbit mAb

Catalog No.: A24733 **Recombinant**

Basic Information

Observed MW

16kDa/18kDa

Calculated MW

16kDa

Category

Primary antibody

Applications

WB,ELISA

Cross-Reactivity

Mouse, Rat

CloneNo number

ARC61989

Background

Enables cytokine activity. Involved in several processes, including innate immune response in mucosa; negative regulation of white fat cell proliferation; and regulation of gene expression. Acts upstream of or within several processes, including T-helper cell differentiation; positive regulation of macromolecule metabolic process; and regulation of leukocyte activation. Located in external side of plasma membrane and extracellular space. Is expressed in several structures, including brain; colon; hemolymphoid system; liver; and placenta. Used to study Sjogren's syndrome; atopic dermatitis; and type 1 diabetes mellitus. Human ortholog(s) of this gene implicated in several diseases, including asthma (multiple); autoimmune disease (multiple); hepatitis B; hepatitis C; and pancreatic cancer (multiple). Orthologous to human IL4 (interleukin 4).

Recommended Dilutions

WB 1:2000 - 1:8000

ELISA Recommended starting concentration is 1 µg/mL. Please optimize the concentration based on your specific assay requirements.

Immunogen Information

Gene ID

16189

Swiss Prot

P07750

Immunogen

Recombinant fusion protein containing a sequence corresponding to amino acids 21-140 of mouse IL4 (NP_067258.1).

Synonyms

IL-4; BSF-1; IL4

Contact

☎ | 400-999-6126

✉ | cn.market@abclonal.com.cn

🌐 | www.abclonal.com.cn

Product Information

Source

Rabbit

Isotype

IgG

Purification

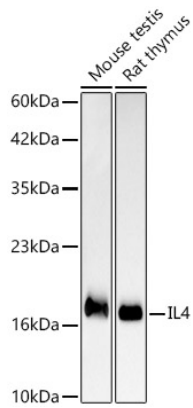
Affinity purification

Storage

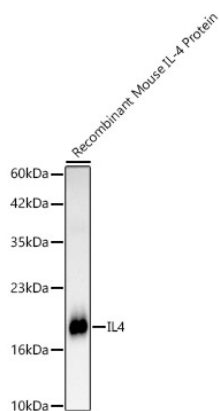
Store at -20°C. Avoid freeze / thaw cycles.

Buffer: PBS with 0.05% proclin300,0.05% BSA,50% glycerol,pH7.3.

Validation Data



Western blot analysis of various lysates, using IL4 Rabbit mAb (A24733) at 1:2000 dilution.
Secondary antibody: HRP-conjugated Goat anti-Rabbit IgG (H+L) (AS014) at 1:10000 dilution.
Lysates/proteins: 25µg per lane.
Blocking buffer: 3% nonfat dry milk in TBST.
Detection: ECL Basic Kit (RM00020).
Exposure time: 30s.



Western blot analysis of Recombinant Mouse IL-4 Protein (RP01161), using IL4 Rabbit mAb (A24733) at 1:2000 dilution.
Secondary antibody: HRP-conjugated Goat anti-Rabbit IgG (H+L) (AS014) at 1:10000 dilution.
Lysates/proteins: 10ng per lane.
Blocking buffer: 3% nonfat dry milk in TBST.
Detection: ECL Basic Kit (RM00020).
Exposure time: 30s.