

[KO Validated] TRIM21/SS-A Rabbit mAb

Catalog No.: A24737 **KO** **Validated** **Recombinant**

Basic Information

Observed MW

54kDa,60kDa

Calculated MW

54kDa

Category

Primary antibody

Applications

ELISA,WB

Cross-Reactivity

Human, Rat

CloneNo number

ARC64169

Background

This gene encodes a member of the tripartite motif (TRIM) family. The TRIM motif includes three zinc-binding domains, a RING, a B-box type 1 and a B-box type 2, and a coiled-coil region. The encoded protein is part of the RoSSA ribonucleoprotein, which includes a single polypeptide and one of four small RNA molecules. The RoSSA particle localizes to both the cytoplasm and the nucleus. RoSSA interacts with autoantigens in patients with Sjogren syndrome and systemic lupus erythematosus. Alternatively spliced transcript variants for this gene have been described but the full-length nature of only one has been determined.

Recommended Dilutions

WB 1:500 - 1:1000

Immunogen Information

Gene ID

6737

Swiss Prot

P19474

Immunogen

Recombinant Protein corresponding to a sequence within amino acids 86-334 of human TRIM21 (NP_003361.1).

Synonyms

SSA; RO52; SSA1; RNF81; Ro/SSA; -A

Contact

 | 400-999-6126 | cn.market@abclonal.com.cn | www.abclonal.com.cn

Product Information

Source

Rabbit

Isotype

IgG

Purification

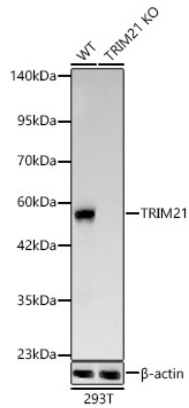
Affinity purification

Storage

Store at -20°C. Avoid freeze / thaw cycles.

Buffer: PBS with 0.05% proclin300,0.05% BSA,50% glycerol,pH7.3.

Validation Data



Western blot analysis of lysates from wild type (WT) and TRIM21 knockout (KO) 293T(KO) cells, using TRIM21 Rabbit mAb (A24737) at 1:1000 dilution.

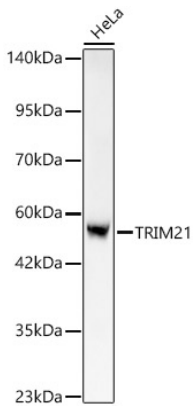
Secondary antibody: HRP Goat Anti-Rabbit IgG (H+L) (AS014) at 1:10000 dilution.

Lysates/proteins: 25ug per lane.

Blocking buffer: 3% nonfat dry milk in TBST.

Detection: ECL Basic Kit (RM00020).

Exposure time: 45s.



Western blot analysis of lysates from HeLa cells, using TRIM21 Rabbit mAb (A24737) at 1:1000 dilution.

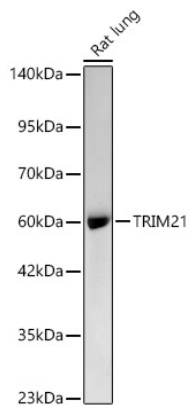
Secondary antibody: HRP Goat Anti-Rabbit IgG (H+L) (AS014) at 1:10000 dilution.

Lysates/proteins: 25ug per lane.

Blocking buffer: 3% nonfat dry milk in TBST.

Detection: ECL Basic Kit (RM00020).

Exposure time: 45s.



Western blot analysis of lysates from Rat lung, using TRIM21 Rabbit mAb (A24737) at 1:1000 dilution.

Secondary antibody: HRP Goat Anti-Rabbit IgG (H+L) (AS014) at 1:10000 dilution.

Lysates/proteins: 25ug per lane.

Blocking buffer: 3% nonfat dry milk in TBST.

Detection: ECL Basic Kit (RM00020).

Exposure time: 90s.