

# IGF1 Rabbit pAb

Catalog No.: A24744

## Basic Information

### Observed MW

20kDa

### Calculated MW

22kDa

### Category

Primary antibody

### Applications

WB

### Cross-Reactivity

Mouse, Rat

## Background

The protein encoded by this gene is similar to insulin in function and structure and is a member of a family of proteins involved in mediating growth and development. The encoded protein is processed from a precursor, bound by a specific receptor, and secreted. Defects in this gene are a cause of insulin-like growth factor I deficiency. Alternative splicing results in multiple transcript variants encoding different isoforms that may undergo similar processing to generate mature protein.

## Recommended Dilutions

WB 1:500 - 1:1000

## Immunogen Information

### Gene ID

3479

### Swiss Prot

P05019

### Immunogen

Synthetic peptide. This information is considered to be commercially sensitive.

### Synonyms

IGF; MGF; IGFI; IGF-I; IGF1

## Contact

☎ | 400-999-6126

✉ | [cn.market@abclonal.com.cn](mailto:cn.market@abclonal.com.cn)

🌐 | [www.abclonal.com.cn](http://www.abclonal.com.cn)

## Product Information

### Source

Rabbit

### Isotype

IgG

### Purification

Affinity purification

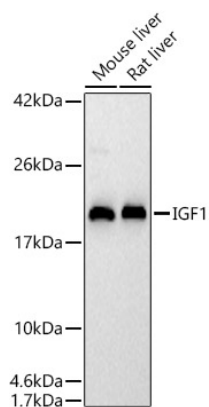
### Storage

Store at -20°C. Avoid freeze / thaw cycles.

Buffer: PBS containing 50% glycerol, preserved with proclin300 or sodium azide (as specified on the Certificate of Analysis), pH 7.3.

## Validation Data

---



Western blot analysis of various lysates using IGF1 Rabbit pAb (A24744) at 1:1000 dilution.  
Secondary antibody: HRP-conjugated Goat anti-Rabbit IgG (H+L) (AS014) at 1:10000 dilution.  
Lysates / proteins: 25 µg per lane.  
Blocking buffer: 3 % nonfat dry milk in TBST.  
Detection: ECL Basic Kit (RM00020).  
Exposure time: 30s.