

PINK1 Rabbit pAb

Catalog No.: A24745 **4 Publications**

Basic Information

Observed MW

65kDa

Calculated MW

63kDa

Category

Primary antibody

Applications

WB

Cross-Reactivity

Human, Rat

Background

This gene encodes a serine/threonine protein kinase that localizes to mitochondria. It is thought to protect cells from stress-induced mitochondrial dysfunction. Mutations in this gene cause one form of autosomal recessive early-onset Parkinson disease.

Recommended Dilutions

WB 1:500 - 1:1000

Immunogen Information

Gene ID

65018

Swiss Prot

Q9BXM7

Immunogen

A synthetic peptide corresponding to a sequence within amino acids 200-300 of human PINK1 (NP_115785.1).

Synonyms

BRPK; PARK6; PINK1

Contact

 | 400-999-6126

 | cn.market@abclonal.com.cn

 | www.abclonal.com.cn

Product Information

Source

Rabbit

Isotype

IgG

Purification

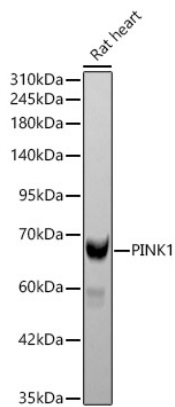
Affinity purification

Storage

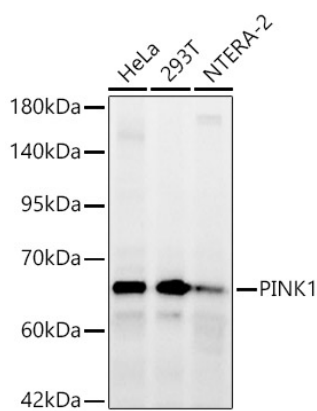
Store at -20°C. Avoid freeze / thaw cycles.

Buffer: PBS with 0.05% proclin300,50% glycerol,pH7.3.

Validation Data



Western blot analysis of lysates from Rat heart using PINK1 Rabbit pAb (A24745) at 1:1000 dilution.
Secondary antibody: HRP-conjugated Goat anti-Rabbit IgG (H+L) (AS014) at 1:10000 dilution.
Lysates/proteins: 25 µg per lane.
Blocking buffer: 3% nonfat dry milk in TBST.
Detection: ECL Basic Kit (RM00020).
Exposure time: 15s.



Western blot analysis of various lysates using PINK1 Rabbit pAb (A24745) at 1:1000 dilution.
Secondary antibody: HRP-conjugated Goat anti-Rabbit IgG (H+L) (AS014) at 1:10000 dilution.
Lysates / proteins: 25 µg per lane.
Blocking buffer: 3 % nonfat dry milk in TBST.
Detection: ECL Basic Kit (RM00020).
Exposure time: 180s.