

# [KD Validated] CYB5R3 Rabbit pAb

Catalog No.: A24755

## Basic Information

### Observed MW

30-38kDa/38kDa

### Calculated MW

31kDa/34kDa/38kDa

### Category

Primary antibody

### Applications

ELISA, WB

### Cross-Reactivity

Human, Rat

## Background

This gene encodes cytochrome b5 reductase, which includes a membrane-bound form in somatic cells (anchored in the endoplasmic reticulum, mitochondrial and other membranes) and a soluble form in erythrocytes. The membrane-bound form exists mainly on the cytoplasmic side of the endoplasmic reticulum and functions in desaturation and elongation of fatty acids, in cholesterol biosynthesis, and in drug metabolism. The erythrocyte form is located in a soluble fraction of circulating erythrocytes and is involved in methemoglobin reduction. The membrane-bound form has both membrane-binding and catalytic domains, while the soluble form has only the catalytic domain. Alternate splicing results in multiple transcript variants. Mutations in this gene cause methemoglobinemias.

## Recommended Dilutions

WB 1:500 - 1:1000

## Immunogen Information

### Gene ID

1727

### Swiss Prot

P00387

### Immunogen

Recombinant Protein corresponding to a sequence within amino acids 27-301 of human CYB5R3(NM\_000398.7).

### Synonyms

CYB5R3; B5R; DIA1; cytochrome b5 reductase 3

## Contact

☎ | 400-999-6126

✉ | [cn.market@abclonal.com.cn](mailto:cn.market@abclonal.com.cn)

🌐 | [www.abclonal.com.cn](http://www.abclonal.com.cn)

## Product Information

### Source

Rabbit

### Isotype

IgG

### Purification

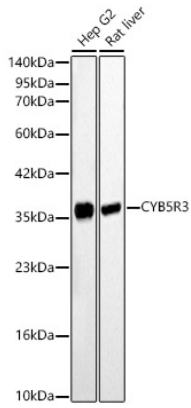
Affinity purification

### Storage

Store at -20°C. Avoid freeze / thaw cycles.

Buffer: PBS with 0.05% proclin300, 50% glycerol, pH7.3.

## Validation Data



Western blot analysis of various lysates using [KD Validated] CYB5R3 Rabbit pAb (A24755) at 1:1000 dilution.

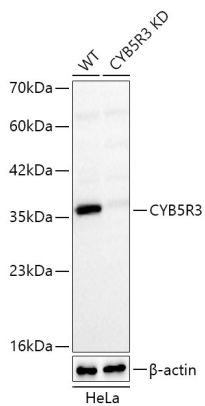
Secondary antibody:HRP Goat Anti-Rabbit IgG (H+L)(AS014) at 1:10000 dilution.

Lysates / proteins: 25 µg per lane.

Blocking buffer: 3 % nonfat dry milk in TBST.

Detection:ECL Basic Kit (RM00020).

Exposure time: 10s.



Western blot analysis of lysates from wild type (WT) and CYB5R3 knockdown (KD) HeLa cells using [KD Validated] CYB5R3 Rabbit pAb (A24755) at 1:1000 dilution.

Secondary antibody:HRP Goat Anti-Rabbit IgG (H+L)(AS014) at 1:10000 dilution.Lysates/proteins: 25 µg per lane.

Blocking buffer: 3% nonfat dry milk in TBST.

Detection:ECL Basic Kit (RM00020).

Exposure time: 10s.