

PRELID3A Rabbit pAb

Catalog No.: A24762

Basic Information

Observed MW

Refer to figures

Calculated MW

19kDa

Category

Primary antibody

Applications

ELISA, IHC-P

Cross-Reactivity

Human

Background

Enables phosphatidic acid transfer activity. Involved in phospholipid transport. Predicted to be active in mitochondrial intermembrane space.

Recommended Dilutions

IHC-P 1:50 - 1:200

Immunogen Information

Gene ID

10650

Swiss Prot

Q96N28

Immunogen

A synthetic peptide corresponding to a sequence within amino acids 70-172 of human PRELID3A(NP_006544.2).

Synonyms

SLMO1; C18orf43; HFL-EDDG1

Contact

☎ | 400-999-6126

✉ | cn.market@abclonal.com.cn

🌐 | www.abclonal.com.cn

Product Information

Source

Rabbit

Isotype

IgG

Purification

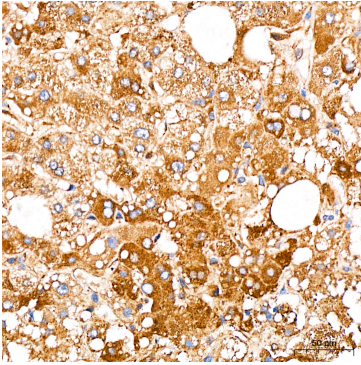
Affinity purification

Storage

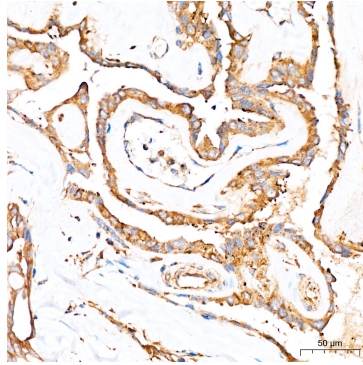
Store at -20°C. Avoid freeze / thaw cycles.

Buffer: PBS with 0.05% proclin300, 50% glycerol, pH7.3.

Validation Data



Immunohistochemistry analysis of PRELID3A in paraffin-embedded human liver cancer tissue using PRELID3A Rabbit pAb (A24762) at a dilution of 1:100 (40x lens). High pressure antigen retrieval was performed with 0.01 M citrate buffer (pH 6.0) prior to IHC staining.



Immunohistochemistry analysis of PRELID3A in paraffin-embedded human thyroid cancer tissue using PRELID3A Rabbit pAb (A24762) at a dilution of 1:100 (40x lens). High pressure antigen retrieval was performed with 0.01 M citrate buffer (pH 6.0) prior to IHC staining.