

CYP11B2 Rabbit pAb

Catalog No.: A24763

Basic Information

Observed MW

50kDa

Calculated MW

57kDa

Category

Primary antibody

Applications

WB,IF-P,ELISA

Cross-Reactivity

Human, Mouse, Rat

Background

This gene encodes a member of the cytochrome P450 superfamily of enzymes. The cytochrome P450 proteins are monooxygenases which catalyze many reactions involved in drug metabolism and synthesis of cholesterol, steroids and other lipids. This protein localizes to the mitochondrial inner membrane. The enzyme has steroid 18-hydroxylase activity to synthesize aldosterone and 18-oxocortisol as well as steroid 11 beta-hydroxylase activity. Mutations in this gene cause corticosterone methyl oxidase deficiency.

Recommended Dilutions

WB 1:1000 - 1:5000

IF-P 1:100 - 1:500

ELISA Recommended starting concentration is 1 µg/mL. Please optimize the concentration based on your specific assay requirements.

Immunogen Information

Gene ID

1585

Swiss Prot

P19099

Immunogen

Synthetic peptide. This information is considered to be commercially sensitive.

Synonyms

CYP11B2; ALDOS; CPN2; CYP11B; CYP11BL; CYPXIB2; P-450C18; P450C18; P450aldo; cytochrome P450 11B2; mitochondrial

Contact

☎ | 400-999-6126

✉ | cn.market@abclonal.com.cn

🌐 | www.abclonal.com.cn

Product Information

Source

Rabbit

Isotype

IgG

Purification

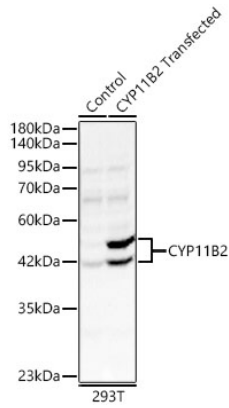
Affinity purification

Storage

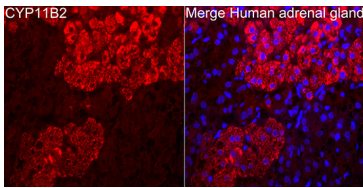
Store at -20°C. Avoid freeze / thaw cycles.

Buffer: PBS containing 50% glycerol, preserved with proclin300 or sodium azide (as specified on the Certificate of Analysis), pH 7.3.

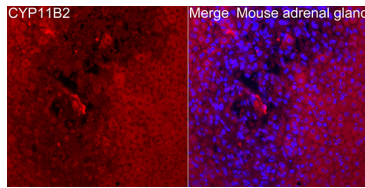
Validation Data



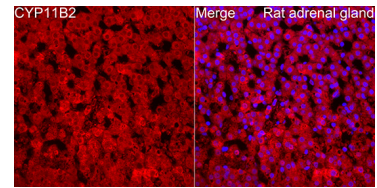
Western blot analysis of lysates from wild type (WT) and 293T cells transfected with CYP11B2 using CYP11B2 Rabbit pAb (A24763) at 1:2000 dilution.
Secondary antibody: HRP-conjugated Goat anti-Rabbit IgG (H+L) (AS014) at 1:10000 dilution.
Lysates/proteins: 25 µg per lane.
Blocking buffer: 3% nonfat dry milk in TBST.
Detection: ECL Basic Kit (RM00020).
Exposure time: 10s.



Immunofluorescence analysis of paraffin-embedded Human adrenal gland using CYP11B2 Rabbit pAb(A24763) at a dilution of 1:200 (40x lens). Secondary antibody: Cy3 Goat Anti-Rabbit IgG (H+L)(AS007) at 1:500 dilution. Blue: DAPI for nuclear staining.



Immunofluorescence analysis of paraffin-embedded Mouse adrenal gland using CYP11B2 Rabbit pAb(A24763) at a dilution of 1:200 (40x lens). Secondary antibody: Cy3 Goat Anti-Rabbit IgG (H+L)(AS007) at 1:500 dilution. Blue: DAPI for nuclear staining.



Immunofluorescence analysis of paraffin-embedded Rat adrenal gland using CYP11B2 Rabbit pAb(A24763) at a dilution of 1:200 (40x lens). Secondary antibody: Cy3 Goat Anti-Rabbit IgG (H+L)(AS007) at 1:500 dilution. Blue: DAPI for nuclear staining.