

[KD Validated] MRPL11 Rabbit pAb

Catalog No.: A24775

Basic Information

Observed MW

21kDa

Calculated MW

18kDa/19kDa/20kDa

Category

Primary antibody

Applications

ELISA, WB, IP

Cross-Reactivity

Human

Background

This nuclear gene encodes a 39S subunit component of the mitochondrial ribosome. Alternative splicing results in multiple transcript variants. Pseudogenes for this gene are found on chromosomes 5 and 12.

Recommended Dilutions

WB 1:500 - 1:1000

IP 0.5µg-4µg antibody for
200µg-400µg extracts of
whole cells

Immunogen Information

Gene ID

65003

Swiss Prot

Q9Y3B7

Immunogen

A synthetic peptide corresponding to a sequence within amino acids 91-192 of human MRPL11(NP_057134.1).

Synonyms

MRPL11; CGI-113; L11MT; MRP-L11; mitochondrial ribosomal protein L11

Contact

☎ | 400-999-6126

✉ | cn.market@abclonal.com.cn

🌐 | www.abclonal.com.cn

Product Information

Source

Rabbit

Isotype

IgG

Purification

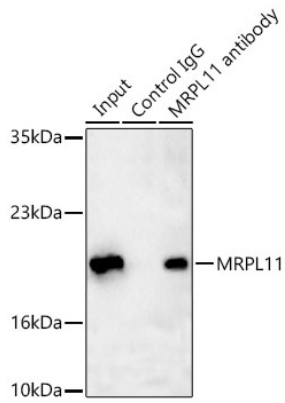
Affinity purification

Storage

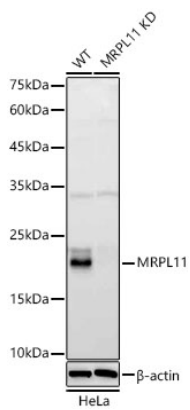
Store at -20°C. Avoid freeze / thaw cycles.

Buffer: PBS with 0.05% proclin300, 50% glycerol, pH7.3.

Validation Data



Immunoprecipitation of MRPL11 in 500 µg extracts from HeLa cells using 3 µg MRPL11 Rabbit pAb (A24775). Western blot analysis was performed using MRPL11 Rabbit pAb (A24775) at 1:1000 dilution.



Western blot analysis of lysates from wild type (WT) and MRPL11 knockdown (KD) HeLa cells using [KD Validated] MRPL11 Rabbit pAb (A24775) at 1:1000 dilution.
Secondary antibody: HRP Goat Anti-Rabbit IgG (H+L)(AS014) at 1:10000 dilution. Lysates/proteins: 25 µg per lane.
Blocking buffer: 3% nonfat dry milk in TBST.
Detection: ECL Basic Kit (RM00020).
Exposure time: 90s.