

# ABflo® 594 Rabbit anti-Mouse CD127/IL-7R $\alpha$ mAb

Catalog No.: A24790

## Basic Information

### Observed MW

### Calculated MW

51kDa

### Category

Primary antibody

### Applications

FC

### Cross-Reactivity

Mouse

### CloneNo number

ARC63550

### Conjugate

ABflo® 594. Ex:588nm. Em:604nm.

## Background

Interleukin-7 is a glycoprotein involved in the regulation of lymphopoiesis. Response of cells to IL7 is dependent on the presence of the interleukin 7 receptor (IL7R); the active receptor is a  $\alpha/\gamma$  chain heterodimer. The  $\gamma(c)$  chain, which also associates with the interleukin-2 receptor, serves primarily to activate signal transduction by the IL7R complex, while the  $\alpha$  chain of IL7R determines specific signaling events through its association with cytoplasmic signaling molecules.

## Recommended Dilutions

FC 5  $\mu$ l per  $10^6$  cells in  
100  $\mu$ l volume

## Immunogen Information

### Gene ID

16197

### Swiss Prot

P16872

### Immunogen

Recombinant protein (or fragment). This information is considered to be commercially sensitive.

### Synonyms

CD127; IL-7R $\alpha$

## Contact

 | 400-999-6126

 | [cn.market@abclonal.com.cn](mailto:cn.market@abclonal.com.cn)

 | [www.abclonal.com.cn](http://www.abclonal.com.cn)

## Product Information

### Source

Rabbit

### Isotype

IgG

### Purification

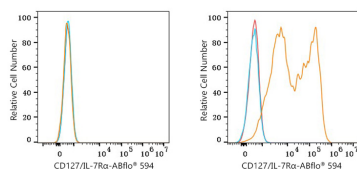
Affinity purification

### Storage

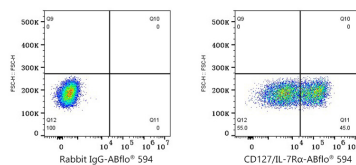
Store at 2-8°C. Avoid freeze.

Buffer: PBS containing 0.2% BSA, preserved with proclin300 or sodium azide (as specified on the Certificate of Analysis), pH 7.3.

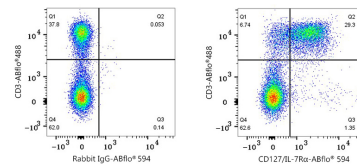
## Validation Data



Flow cytometry:  $1 \times 10^6$  293T cells (negative control, left) and 293T (Transfection, right) cells were surface-stained with ABflo® 594 Rabbit anti-Mouse CD127/IL-7R $\alpha$  mAb (A24790, 5  $\mu$ l/Test, orange line) or ABflo® 594 Rabbit IgG isotype control (A23821, 5  $\mu$ l/Test, blue line). Non-fluorescently stained cells were used as blank control (red line).



Flow cytometry:  $1 \times 10^6$  293T (Transfection) cells were surface-stained with ABflo® 594 Rabbit IgG isotype control (A23821, 5  $\mu$ l/Test, left) or ABflo® 594 Rabbit anti-Mouse CD127/IL-7R $\alpha$  mAb (A24790, 5  $\mu$ l/Test, right).



Flow cytometry:  $1 \times 10^6$  C57BL/6 mouse splenocytes were surface-stained with ABflo® 488 Rat anti-Mouse CD3 mAb (A27161, 5  $\mu$ l/Test) and ABflo® 594 Rabbit IgG isotype control (A23821, 5  $\mu$ l/Test, left) or ABflo® 594 Rabbit anti-Mouse CD127/IL-7R $\alpha$  mAb (A24790, 5  $\mu$ l/Test, right).