

ABflo® 594 Rabbit anti-Human CD55 mAb

Catalog No.: A24792

Basic Information

Observed MW

Refer to figures

Calculated MW

39kDa/41kDa/48kDa/56kDa/59kDa

Category

Primary antibody

Applications

FC

Cross-Reactivity

Human

CloneNo number

ARC54520-ABflo594

Conjugate

ABflo® 594. Ex:588nm. Em:604nm.

Recommended Dilutions

FC 5 µl per 10⁶ cells in
100 µl volume

Background

This gene encodes a glycoprotein involved in the regulation of the complement cascade. Binding of the encoded protein to complement proteins accelerates their decay, thereby disrupting the cascade and preventing damage to host cells. Antigens present on this protein constitute the Cromer blood group system (CROM). Alternative splicing results in multiple transcript variants. The predominant transcript variant encodes a membrane-bound protein, but alternatively spliced transcripts may produce soluble proteins.

Immunogen Information

Gene ID

1604

Swiss Prot

P08174

Immunogen

Recombinant fusion protein containing a sequence corresponding to amino acids 35-353 of human CD55 (NP_000565.1).

Synonyms

CR; TC; DAF; CROM; CHAPLE; CD55 molecule

Contact

☎ | 400-999-6126

✉ | cn.market@abclonal.com.cn

🌐 | www.abclonal.com.cn

Product Information

Source

Rabbit

Isotype

IgG

Purification

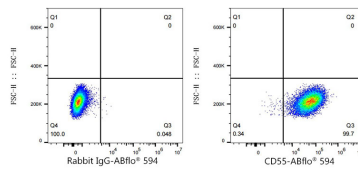
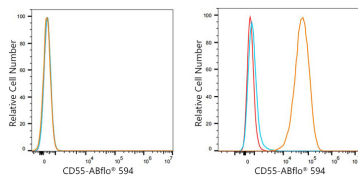
Affinity purification

Storage

Store at 2-8°C. Avoid freeze.

Buffer: PBS with 0.03% proclin300,0.2% BSA,pH7.3.

Validation Data



Flow cytometry: 1×10^6 SH-SY5Y cells (negative control, left) and K-562 cells (right) were surface-stained with ABflo® 594 Rabbit anti-Human CD55 mAb (A24792, 5 μ l/Test, orange line) or ABflo® 594 Rabbit IgG isotype control (A23821, 5 μ l/Test, blue line). Non-fluorescently stained cells were used as blank control (red line).

Flow cytometry: 1×10^6 K-562 cells were surface-stained with ABflo® 594 Rabbit IgG isotype control (A23821, 5 μ l/Test, left) or ABflo® 594 Rabbit anti-Human CD55 mAb (A24792, 5 μ l/Test, right).