

# ABflo® 647 Rabbit anti-Human CD263/TRAIL-R3 mAb

Catalog No.: A24796

## Basic Information

### Observed MW

### Calculated MW

27kDa

### Category

Primary antibody

### Applications

FC

### Cross-Reactivity

Human

### CloneNo number

ARC63903-ABflo647

### Conjugate

ABflo® 647. Ex:648nm. Em:664nm.

## Recommended Dilutions

FC 5 µl per 10<sup>6</sup> cells in  
100 µl volume

## Background

The protein encoded by this gene is a member of the TNF-receptor superfamily. This receptor contains an extracellular TRAIL-binding domain and a transmembrane domain, but no cytoplasmic death domain. This receptor is not capable of inducing apoptosis, and is thought to function as an antagonistic receptor that protects cells from TRAIL-induced apoptosis. This gene was found to be a p53-regulated DNA damage-inducible gene. The expression of this gene was detected in many normal tissues but not in most cancer cell lines, which may explain the specific sensitivity of cancer cells to the apoptosis-inducing activity of TRAIL.

## Immunogen Information

### Gene ID

8794

### Swiss Prot

O14798

### Immunogen

Recombinant fusion protein containing a sequence corresponding to amino acids 26-235 of human CD263/TRAIL-R3(NP\_003832.3).

### Synonyms

TNFRSF10C; CD263; DCR1; DCR1-TNFR; LIT; TRAIL-R3; TRAILR3; TRID; TNF receptor superfamily member 10c

## Contact

☎ | 400-999-6126

✉ | [cn.market@abclonal.com.cn](mailto:cn.market@abclonal.com.cn)

🌐 | [www.abclonal.com.cn](http://www.abclonal.com.cn)

## Product Information

### Source

Rabbit

### Isotype

IgG

### Purification

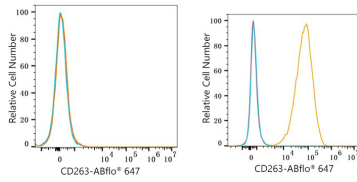
Affinity purification

### Storage

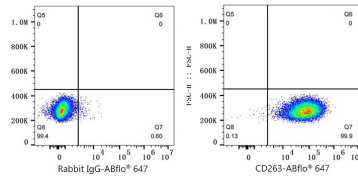
Store at 2-8°C. Avoid freeze.

Buffer: PBS with 0.03% proclin300,0.2% BSA,pH7.3.

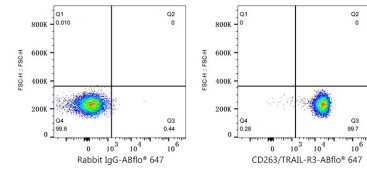
## Validation Data



Flow cytometry:  $1 \times 10^6$  K-562 cells (Low Expression, left) and BEWO (right) cells were surface-stained with ABflo® 647 Rabbit anti-Human CD263/TRAIL-R3 mAb (A24796, 5  $\mu$ l/Test, orange line) or ABflo® 647 Rabbit IgG isotype control (A22070, 5  $\mu$ l/Test, blue line). Non-fluorescently stained cells were used as blank control (red line).



Flow cytometry:  $1 \times 10^6$  BEWO cells were surface-stained with ABflo® 647 Rabbit IgG isotype control (A22070, 5  $\mu$ l/Test, left) or ABflo® 647 Rabbit anti-Mouse CD127/IL-7R $\alpha$  mAb (A24796, 5  $\mu$ l/Test, right).



Flow cytometry:  $1 \times 10^6$  Human peripheral blood granulocytes were surface-stained with ABflo® 647 Rabbit IgG isotype control (A22070, 5  $\mu$ l/Test, left) or ABflo® 647 Rabbit anti-Human CD263/TRAIL-R3 mAb (A24796, 5  $\mu$ l/Test, right).