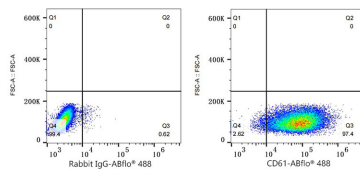
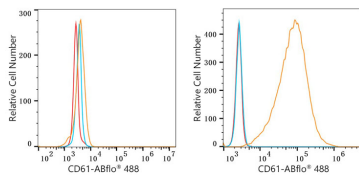


Validation Data



Flow cytometry: 1×10^6 U-937 cells (negative control, left) and HEL cells (right) were intracellularly-stained with ABflo® 488 Rabbit anti-Human CD61 mAb (A24800, 5 μ l/Test, orange line) or ABflo® 488 Rabbit IgG isotype control (A22069, 5 μ l/Test, blue line). Non-fluorescently stained cells were used as blank control (red line).

Flow cytometry: 1×10^6 HEL cells were intracellularly-stained with ABflo® 488 Rabbit IgG isotype control (A22069, 5 μ l/Test, left) or ABflo® 488 Rabbit anti-Human CD61 mAb (A24800, 5 μ l/Test, right).