

LAMP1/CD107a Rabbit PolymAb®

Catalog No.: A24804-PM

Basic Information

Observed MW

90-120kDa

Calculated MW

43kDa

Category

Primary antibody

Applications

WB, IHC-P, IF/ICC, ELISA

Cross-Reactivity

Human, Mouse

Background

Enables protein domain specific binding activity. Involved in protein stabilization. Located in several cellular components, including cytoplasmic vesicle; sarcolemma; and vacuole. Is expressed in several structures, including 1-cell stage embryo; central nervous system; craniocervical region bone; extraembryonic component; and gut. Orthologous to human LAMP1 (lysosomal associated membrane protein 1).

Recommended Dilutions

WB 1:25000 - 1:100000

IHC-P 1:50 - 1:200

IF/ICC 1:50 - 1:200

ELISA Recommended starting concentration is 1 µg/mL. Please optimize the concentration based on your specific assay requirements.

Immunogen Information

Gene ID

16783/ 3916

Swiss Prot

P11438/P11279

Immunogen

Recombinant protein of human/mouse CD107a.

Synonyms

P2B; Perk; LGP-A; CD107a; Lamp-1; LGP-120

Contact

☎ | 400-999-6126

✉ | cn.market@abclonal.com.cn

🌐 | www.abclonal.com.cn

Product Information

Source

Rabbit

Isotype

IgG

Purification

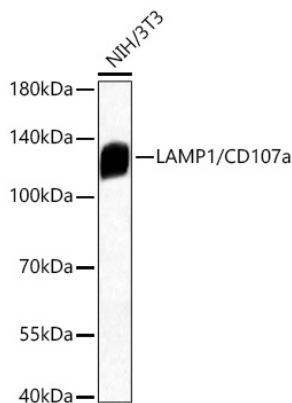
Affinity purification

Storage

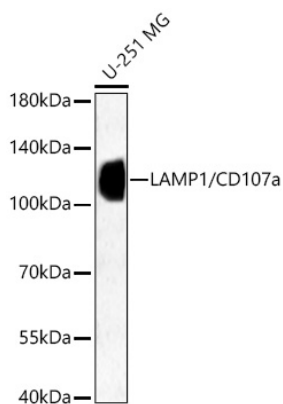
Store at -20°C. Avoid freeze / thaw cycles.

Buffer: PBS with 0.05% proclin300, 0.05% BSA, 50% glycerol, pH7.3.

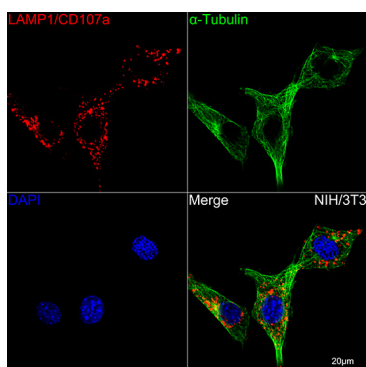
Validation Data



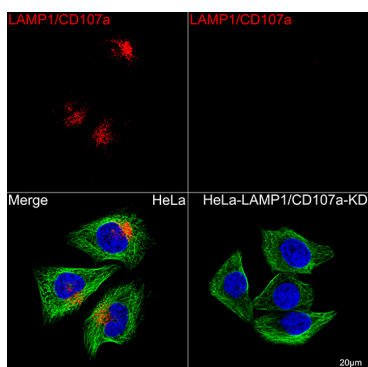
Western blot analysis of lysates from NIH/3T3 cells using LAMP1/CD107a Rabbit PolymAb® (A24804-PM) at 1:100000 dilution incubated overnight at 4°C.
 Secondary antibody: HRP-conjugated Goat anti-Rabbit IgG (H+L) (AS014) at 1:10000 dilution.
 Lysates/proteins: 25 µg per lane.
 Blocking buffer: 3% nonfat dry milk in TBST.
 Detection: ECL Basic Kit (RM00020).
 Exposure time: 45s.



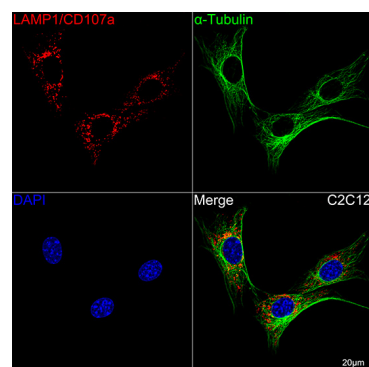
Western blot analysis of lysates from U-251 MG cells using LAMP1/CD107a Rabbit PolymAb® (A24804-PM) at 1:50000 dilution incubated overnight at 4°C.
 Secondary antibody: HRP-conjugated Goat anti-Rabbit IgG (H+L) (AS014) at 1:10000 dilution.
 Lysates/proteins: 25 µg per lane.
 Blocking buffer: 3% nonfat dry milk in TBST.
 Detection: ECL Basic Kit (RM00020).
 Exposure time: 90s.



Confocal imaging of NIH/3T3 cells using LAMP1/CD107a Rabbit PolymAb® (A24804, dilution 1:200) followed by a further incubation with Cy3 Goat Anti-Rabbit IgG (H+L) (AS007, dilution 1:500) (Red). The cells were counterstained with α-Tubulin mAb (AC012, dilution 1:400) followed by incubation with ABflo® 488-conjugated Goat Anti-Mouse IgG (H+L) Ab (AS076, dilution 1:500) (Green). DAPI was used for nuclear staining (blue). Objective: 100x.

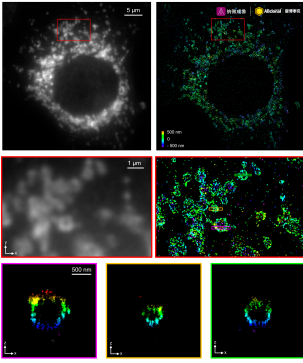


Confocal imaging of HeLa-LAMP1-2E4 and HeLa cells using LAMP1/CD107a Rabbit PolymAb® (A24804, dilution 1:200) followed by a further incubation with Cy3 Goat Anti-Rabbit IgG (H+L) (AS007, dilution 1:500) (Red). The cells were counterstained with α-Tubulin mAb (AC012, dilution 1:400) followed by incubation with ABflo® 488-conjugated Goat Anti-Mouse IgG (H+L) Ab (AS076, dilution 1:500) (Green). DAPI was used for nuclear staining (blue). Objective: 100x.

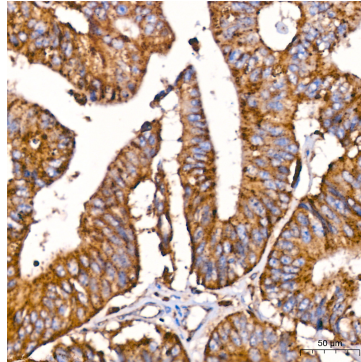


Confocal imaging of C2C12 cells using LAMP1/CD107a Rabbit PolymAb® (A24804, dilution 1:200) followed by a further incubation with Cy3 Goat Anti-Rabbit IgG (H+L) (AS007, dilution 1:500) (Red). The cells were counterstained with α-Tubulin mAb (AC012, dilution 1:400) followed by incubation with ABflo® 488-conjugated Goat Anti-Mouse IgG (H+L) Ab (AS076, dilution 1:500) (Green). DAPI was used for nuclear staining (blue). Objective: 100x.

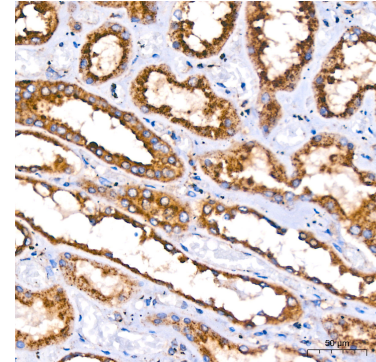
Validation Data



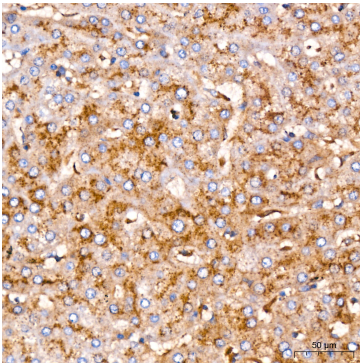
The STORM super-resolution (SR) imaging of NIH/3T3 cells using LAMP1/CD107a Rabbit PolymAb® A2480, Abclonal at dilution of 1:200 with 3% paraformaldehyde (PFA) +0.1% glutaraldehyde (GA) fixation. The immunostaining was performed by Full Automatic Immunofluorescence Workflow System (Workflow Ultra300, Nano-Micro imaging, China). Image was performed with Single-Molecule Localization Super-Resolution Microscopy (STORM Ultra300, Nano-Micro imaging, China). We acknowledge Nano-Micro imaging Biotechnology Co., Ltd. (南京纳微成像生物技术有限公司) in SR image processing and kindly providing this image.



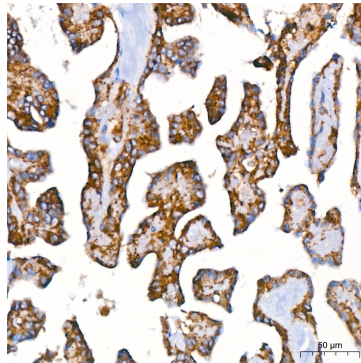
Immunohistochemistry analysis of paraffin-embedded Human colon carcinoma tissue using LAMP1/CD107a Rabbit PolymAb® (A24804-PM) at dilution of 1:200 (40x lens). High pressure antigen retrieval performed with 0.01M Citrate Bufferr (pH 6.0) prior to IHC staining.



Immunohistochemistry analysis of paraffin-embedded Human kidney tissue using LAMP1/CD107a Rabbit PolymAb® (A24804-PM) at dilution of 1:200 (40x lens). High pressure antigen retrieval performed with 0.01M Citrate Bufferr (pH 6.0) prior to IHC staining.



Immunohistochemistry analysis of paraffin-embedded Human liver tissue using LAMP1/CD107a Rabbit PolymAb® (A24804-PM) at dilution of 1:200 (40x lens). High pressure antigen retrieval performed with 0.01M Citrate Bufferr (pH 6.0) prior to IHC staining.



Immunohistochemistry analysis of paraffin-embedded Human thyroid cancer tissue using LAMP1/CD107a Rabbit PolymAb® (A24804-PM) at dilution of 1:200 (40x lens). High pressure antigen retrieval performed with 0.01M Citrate Bufferr (pH 6.0) prior to IHC staining.