

Snail Rabbit mAb

Catalog No.: A24806 **Recombinant**

Basic Information

Observed MW

35kDa

Calculated MW

29kDa

Category

Primary antibody

Applications

ELISA, WB, IF/ICC, IP

Cross-Reactivity

Human

CloneNo number

ARC62698

Background

The Drosophila embryonic protein snail is a zinc finger transcriptional repressor which downregulates the expression of ectodermal genes within the mesoderm. The nuclear protein encoded by this gene is structurally similar to the Drosophila snail protein, and is also thought to be critical for mesoderm formation in the developing embryo. At least two variants of a similar processed pseudogene have been found on chromosome 2.

Recommended Dilutions

WB 1:2000 - 1:10000

IF/ICC 1:50 - 1:200

IP 0.5µg-4µg antibody for
200µg-400µg extracts of
whole cells

Immunogen Information

Gene ID

6615

Swiss Prot

O95863

Immunogen

Recombinant fusion protein containing a sequence corresponding to amino acids 80-157 of human Snail (NP_005976.2).

Synonyms

SNA; SNAH; SNAIL; SLUGH2; SNAIL1; dj710H13.1; Snail

Contact

☎ | 400-999-6126

✉ | cn.market@abclonal.com.cn

🌐 | www.abclonal.com.cn

Product Information

Source

Rabbit

Isotype

IgG

Purification

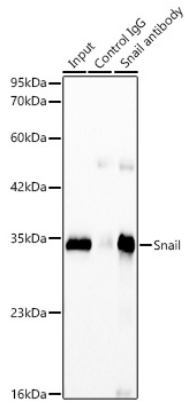
Affinity purification

Storage

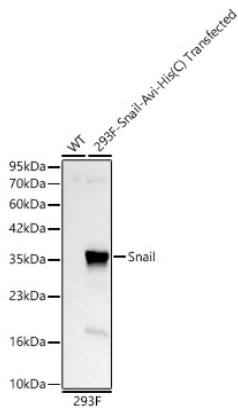
Store at -20°C. Avoid freeze / thaw cycles.

Buffer: PBS with 0.05% proclin300, 0.05% BSA, 50% glycerol, pH7.3.

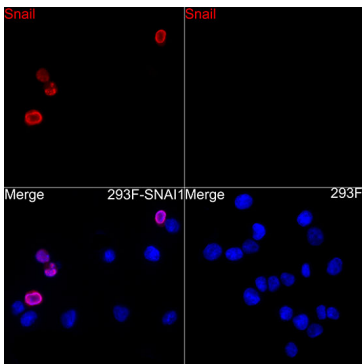
Validation Data



Immunoprecipitation analysis of 300ug extracts from 293F cells transfected with Snail using 3ug Snail Rabbit mAb (A24806 1:100). Western blot was performed from the immunoprecipitate using Snail Rabbit mAb (A24806) at a dilution of 1:9000.



Western blot analysis of lysates from wild type (WT) and 293F transfected with Snail, using Snail Rabbit mAb (A24806) at 1:9000 dilution.
Secondary antibody: HRP Goat Anti-Rabbit IgG (H+L) (AS014) at 1:10000 dilution.
Lysates/proteins: 25ug per lane.
Blocking buffer: 3% nonfat dry milk in TBST.
Detection: ECL Basic Kit (RM00020).
Exposure time: 5s.



Immunofluorescence analysis of 293F cells transfected with Snail, using Snail Rabbit mAb (A24806) at dilution of 1:200 (40x lens).
Secondary antibody: Cy3 Goat Anti-Rabbit IgG (H+L) (AS007) at 1:500 dilution. Blue: DAPI for nuclear staining.