

CD355/CRTAM Rabbit mAb

Catalog No.: A24807 **Recombinant**

Basic Information

Observed MW

66kDa

Calculated MW

22kDa/44kDa

Category

Primary antibody

Applications

ELISA,WB,IF/ICC,FC

Cross-Reactivity

Human

CloneNo number

ARC63867

Background

The CRTAM gene is upregulated in CD4 (see MIM 186940)-positive and CD8 (see CD8A; MIM 186910)-positive T cells and encodes a type I transmembrane protein with V and C1-like Ig domains (Yeh et al., 2008 [PubMed 18329370]).

Recommended Dilutions

WB	1:500 - 1:1000
IF/ICC	1:50 - 1:200
FC	1:100 - 1:500

Immunogen Information

Gene ID

56253

Swiss Prot

O95727

Immunogen

Recombinant fusion protein containing a sequence corresponding to amino acids 18-287 of human CD355/CRTAM (NP_062550.2).

Synonyms

CD355; CD355/CRTAM

Contact

 | 400-999-6126

 | cn.market@abclonal.com.cn

 | www.abclonal.com.cn

Product Information

Source

Rabbit

Isotype

IgG

Purification

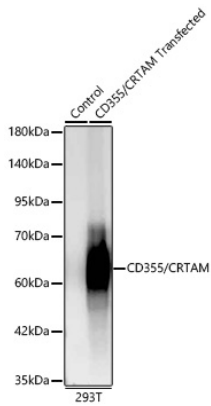
Affinity purification

Storage

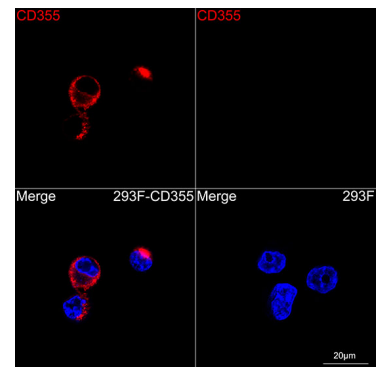
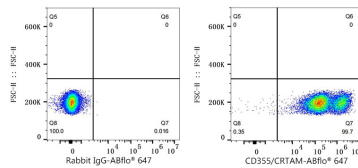
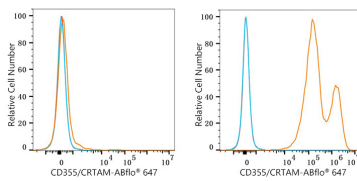
Store at -20°C. Avoid freeze / thaw cycles.

Buffer: PBS with 0.05% proclin300,0.05% BSA,50% glycerol,pH7.3.

Validation Data



Western blot analysis of lysates from wild type (WT) and 293T transfected with CD355/CRTAM, using CD355/CRTAM Rabbit mAb (A24807) at 1:2000 dilution.
 Secondary antibody: HRP Goat Anti-Rabbit IgG (H+L)(AS014) at 1:10000 dilution..
 Lysates/proteins: 25ug per lane.
 Blocking buffer: 3% nonfat dry milk in TBST.
 Detection: ECL Basic Kit (RM00020).
 Exposure time: 30s.



Flow cytometry: 1×10^6 293T cells (negative control, left) and 293T (Transfection, right) cells were surface-stained with CD355/CRTAM Rabbit mAb (A24807, 2 µg/mL, orange line) or ABflo® 647 Rabbit IgG isotype control (A22070, 5 µl/Test, blue line), followed by Alexa Fluor® 647 conjugated goat anti-rabbit pAb staining. Non-fluorescently stained cells were used as blank control (red line).

Flow cytometry: 1×10^6 293T (Transfection) cells were surface-stained with ABflo® 647 Rabbit IgG isotype control (A22070, 5 µl/Test, left) or CD355/CRTAM Rabbit mAb (A24807, 2 µg/mL, right).

Confocal imaging of 293F cells transfected with CD355/CRTAM using CD355/CRTAM Rabbit mAb (A24807, dilution 1:200) followed by incubation with Cy3 Goat Anti-Rabbit IgG (H+L) (AS007, dilution 1:500) (Red). DAPI was used for nuclear staining (blue). Objective: 100x.