

GLYAT/GAT Rabbit mAb

Catalog No.: A24812 **Recombinant**

Basic Information

Observed MW

36kDa

Calculated MW

34kDa

Category

Primary antibody

Applications

ELISA, WB, IHC-P

Cross-Reactivity

Human, Mouse, Rat

CloneNo number

ARC64125

Background

The glycine-N-acyltransferase protein conjugates glycine with acyl-CoA substrates in the mitochondria. The protein is thought to be important in the detoxification of endogenous and xenobiotic acyl-CoA's. Two transcript variants encoding different isoforms have been found for this gene.

Recommended Dilutions

WB 1:1000 - 1:5000

IHC-P 1:50 - 1:200

Immunogen Information

Gene ID

10249

Swiss Prot

Q6IB77

Immunogen

Recombinant fusion protein containing a sequence corresponding to amino acids 1-100 of human GLYAT/GAT (NP_964011.2).

Synonyms

CAT; GAT; ACGNAT; GLYAT/GAT

Contact

☎ | 400-999-6126

✉ | cn.market@abclonal.com.cn

🌐 | www.abclonal.com.cn

Product Information

Source

Rabbit

Isotype

IgG

Purification

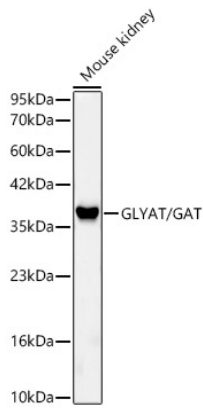
Affinity purification

Storage

Store at -20°C. Avoid freeze / thaw cycles.

Buffer: PBS with 0.05% proclin300, 0.05% BSA, 50% glycerol, pH7.3.

Validation Data



Western blot analysis of lysates from Mouse kidney, using GLYAT/GAT Rabbit mAb (A24812) at 1:2000 dilution.

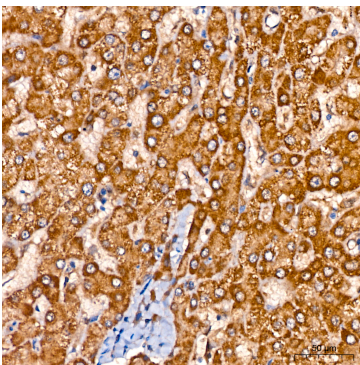
Secondary antibody: HRP Goat Anti-Rabbit IgG (H+L) (AS014) at 1:10000 dilution.

Lysates/proteins: 25ug per lane.

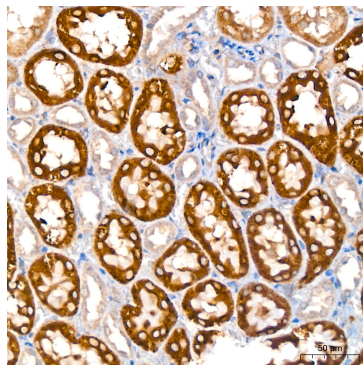
Blocking buffer: 3% nonfat dry milk in TBST.

Detection: ECL Basic Kit (RM00020).

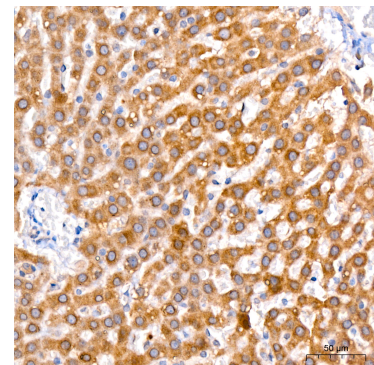
Exposure time: 45s.



Immunohistochemistry analysis of GLYAT/GAT in paraffin-embedded human liver tissue using GLYAT/GAT Rabbit mAb (A24812) at dilution of 1:200 (40x lens). Perform high pressure antigen retrieval with 10 mM citrate buffer pH 6.0 before commencing with IHC staining protocol.



Immunohistochemistry analysis of GLYAT/GAT in paraffin-embedded rat kidney tissue using GLYAT/GAT Rabbit mAb (A24812) at dilution of 1:200 (40x lens). Perform high pressure antigen retrieval with 10 mM citrate buffer pH 6.0 before commencing with IHC staining protocol.



Immunohistochemistry analysis of GLYAT/GAT in paraffin-embedded rat liver tissue using GLYAT/GAT Rabbit mAb (A24812) at dilution of 1:200 (40x lens). Perform high pressure antigen retrieval with 10 mM citrate buffer pH 6.0 before commencing with IHC staining protocol.