

# ABflo® 488 Rabbit anti-Human CD355/CRTAM mAb

Catalog No.: A24818

## Basic Information

### Observed MW

Refer to figures

### Calculated MW

22kDa/44kDa

### Category

Primary antibody

### Applications

FC

### Cross-Reactivity

Human

### CloneNo number

ARC63867-ABflo488

### Conjugate

ABflo® 488. Ex:491nm. Em:516nm.

## Recommended Dilutions

**FC** 5 µl per 10<sup>6</sup> cells in  
100 µl volume

## Background

The CRTAM gene is upregulated in CD4 (see MIM 186940)-positive and CD8 (see CD8A; MIM 186910)-positive T cells and encodes a type I transmembrane protein with V and C1-like Ig domains (Yeh et al., 2008 [PubMed 18329370]).

## Immunogen Information

### Gene ID

56253

### Swiss Prot

O95727

### Immunogen

Recombinant fusion protein containing a sequence corresponding to amino acids 18-287 of human CD355/CRTAM (NP\_062550.2).

### Synonyms

CD355

## Contact

 | 400-999-6126

 | [cn.market@abclonal.com.cn](mailto:cn.market@abclonal.com.cn)

 | [www.abclonal.com.cn](http://www.abclonal.com.cn)

## Product Information

### Source

Rabbit

### Isotype

IgG

### Purification

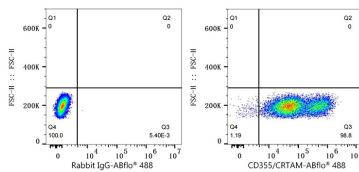
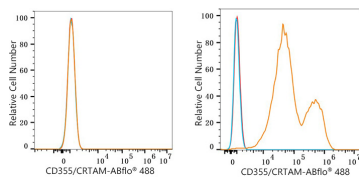
Affinity purification

### Storage

Store at 2-8°C. Avoid freeze.

Buffer: PBS with 0.03% proclin300,0.2% BSA,pH7.3.

## Validation Data



Flow cytometry:  $1 \times 10^6$  293T cells (negative control, left) and 293T (Transfection, right) cells were surface-stained with ABflo® 488 Rabbit anti-Human CD355/CRTAM mAb (A24818,5  $\mu$ l/Test, orange line) or ABflo® 488 Rabbit IgG isotype control (A22069,5  $\mu$ l/Test, blue line). Non-fluorescently stained cells were used as blank control (red line).

Flow cytometry:  $1 \times 10^6$  293T (Transfection) cells were surface-stained with ABflo® 488 Rabbit IgG isotype control (A22069,5  $\mu$ l/Test, left) or ABflo® 488 Rabbit anti-Human CD355/CRTAM mAb (A24818,5  $\mu$ l/Test, right).