

# Integrin $\beta$ 5/ITGB5 Rabbit mAb

Catalog No.: A24824 **Recombinant**

## Basic Information

### Observed MW

100kDa

### Calculated MW

88kDa

### Category

Primary antibody

### Applications

FC

### Cross-Reactivity

Human

### CloneNo number

ARC60858

## Background

This gene encodes a beta subunit of integrin, which can combine with different alpha chains to form a variety of integrin heterodimers. Integrins are integral cell-surface receptors that participate in cell adhesion as well as cell-surface mediated signaling. The alpha $\beta$ 5 integrin is involved in adhesion to vitronectin.

## Recommended Dilutions

FC 1:100 - 1:500

## Immunogen Information

### Gene ID

3693

### Swiss Prot

P18084

### Immunogen

Recombinant Protein corresponding to a sequence within amino acids 24-490 of human Integrin  $\beta$ 5/ITGB5 (NP\_002204.2).

### Synonyms

ITGB5; integrin beta-5; Integrin  $\beta$ 5/ITGB5

## Contact

 | 400-999-6126

 | [cn.market@abclonal.com.cn](mailto:cn.market@abclonal.com.cn)

 | [www.abclonal.com.cn](http://www.abclonal.com.cn)

## Product Information

### Source

Rabbit

### Isotype

IgG

### Purification

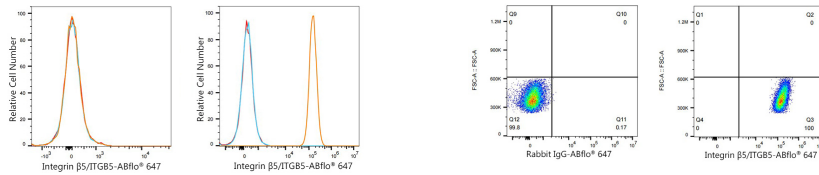
Affinity purification

### Storage

Store at -20°C. Avoid freeze / thaw cycles.

Buffer: PBS with 0.05% proclin300,0.05% BSA,50% glycerol,pH7.3.

## Validation Data



Flow cytometry:  $1 \times 10^6$  Jurkat cells (negative control, left) and A549 cells (right) were surface-stained with Integrin  $\beta 5$ /ITGB5 Rabbit mAb (A24824, 5  $\mu$ l/Test, orange line) or ABflo® 647 Rabbit IgG isotype control (A22070, 5  $\mu$ l/Test, blue line), followed by Alexa Fluor® 647 conjugated goat anti-rabbit pAb staining. Non-fluorescently stained cells were used as blank control (red line).

Flow cytometry:  $1 \times 10^6$  A549 cells were surface-stained with ABflo® 647 Rabbit IgG isotype control (A22070, 5  $\mu$ l/Test, left) or Integrin  $\beta 5$ /ITGB5 Rabbit mAb (A24824, 5  $\mu$ l/Test, right).